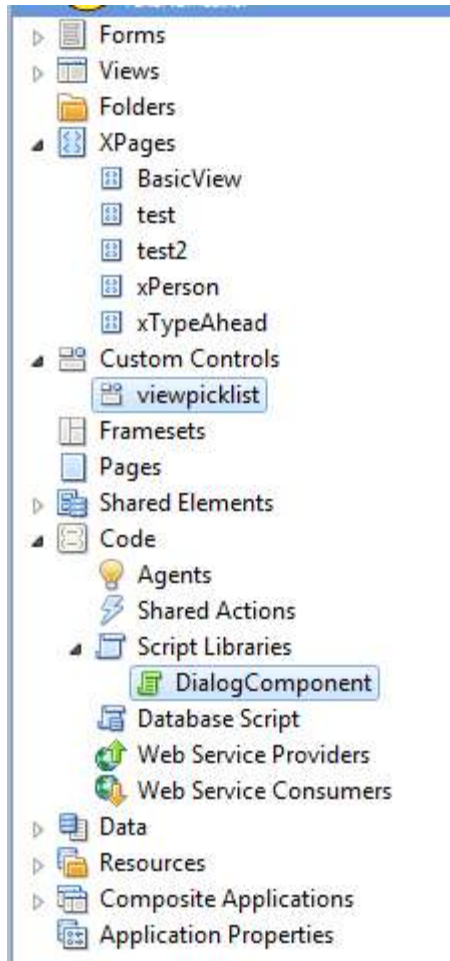
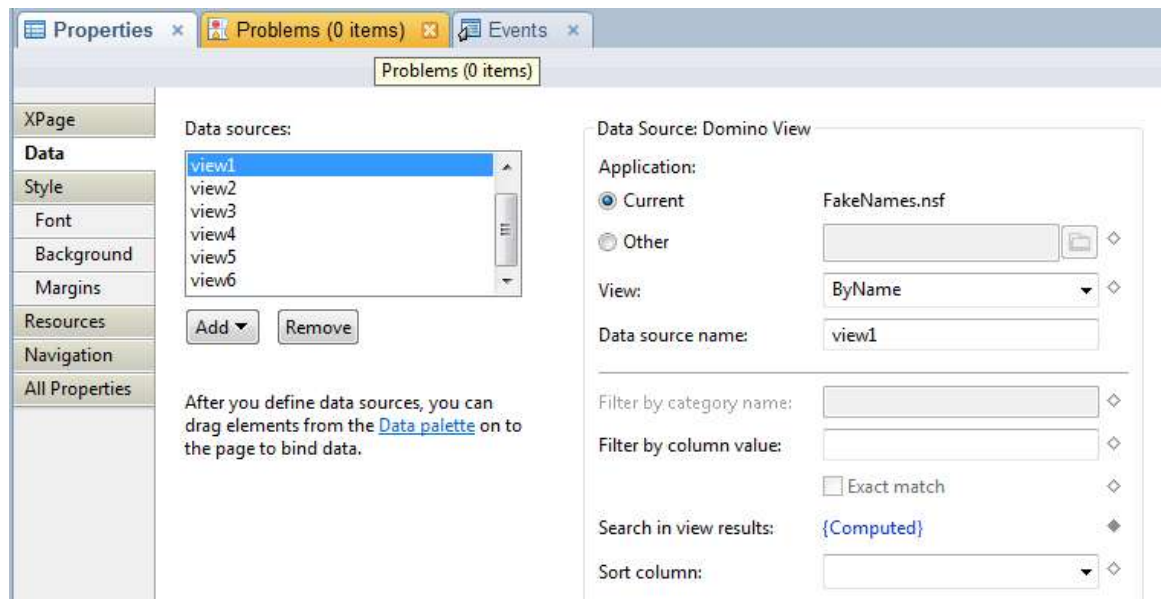


## Instructions

1. Copy the custom control 'viewpicklist' and the Client Side Java Script file located in 'Code-Script-Libraries-DialogComponent' to your Lotus Notes Database. And put them in the appropriate places.



2. Create an Xpage or open an existing Xpage. If you do not have a view datasource on the xpage create one for the view you would like to use.



3. Drag the viewpicklist custom control onto your Xpage.
4. Start Setting the properties for the custom control. They are located on the all properties tab.

Properties x Problems (0 items) x Events x		
Custom Control		
Custom Properties		
All Properties		
Property	Value	
▲ 1. View PickList		
dialogHeight		
dialogID	dialog3	
dialogTitle	this is the title	
dialogWidth	700px	
onReturn	Set Scope Value	
refreshID	inputText5	
type	Single Value	
varName	sessionScope.testme1	
▲ 2. View Info		
datasrc	view3	
rowsPerPage	10	
select	Column	
selectColumn	2	
▶ viewColumn		
▲ 3. Select Button		
buttonClass		
buttonImage	./add.png	
buttonText		
▲ 4. Search Bar		
searchBar	true	
searchBarClass	headerclass	
searchButtonClass	button2	
searchButtonImage		
searchButtonText	Search	
searchVar	sessionScope.searchthis2	
▲ 5. Type Ahead Bar		
typeAheadBar	false	
▲ 6. Cancel Button		
cancelButtonClass	button2 floatthisright	
cancelButtonImg		
cancelButtonText	Cancel	
7. Finish Button		
▶ basics		
▲ styling		
disableTheme		
themeId		
▶ styling - pager		
▶ styling - picklist		

5. Enter the dialog id, this needs o be a unique value for each time you use the custom control.
6. Set the property onReturn to your desired choice. You have 3 options, Set Field Value, Set Scope Value And Set Document Value.

Set field value: will set the id of the element you want the selection to go into.

**example: `inputText1`**

Set Scope Value: Set a scope variable with a the value.

**example: `sessionScope.city`**

Set Document Value: set the value of a bound document datasource field.

**example: `document1.city`**

7. Select weather you want this to be a multi value pick list or a single value picklist.
8. Depending what you set the onReturn value to you will then need to enter in the varName or the fieldName. Only the appropriate property will show depending on the value in onReturn. See examples above.
9. Next choose the ID of the element you want to refresh after you have chosen your values.
10. Choose the dataset and choose the view you would like to use in the custom control.
11. Then add the property for select, choose wether you would like to return the column value or a field of the document form the view. You will also need to choose the column, or field depending on this selection.
12. Add your columns to the picklist. Use the viewColumn property to add as many columns from the view as you would like. They will display in the order you have entered them.
13. Format the select button with the options available.
14. Decide if you want to use a search bar to filter the results or if you would like to use a type ahead field. To configure these look at the examples in the database provided.