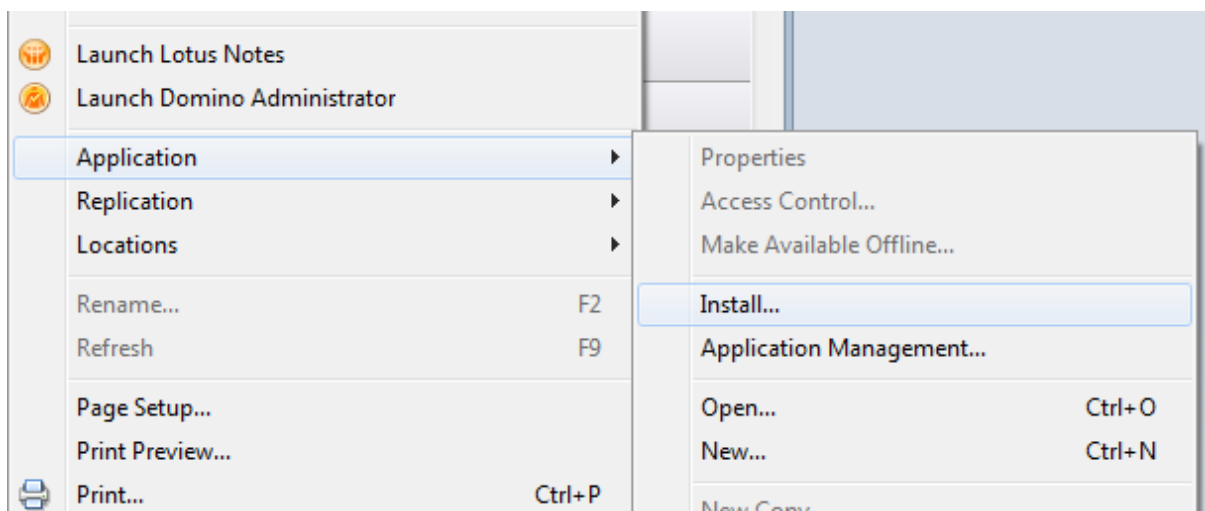
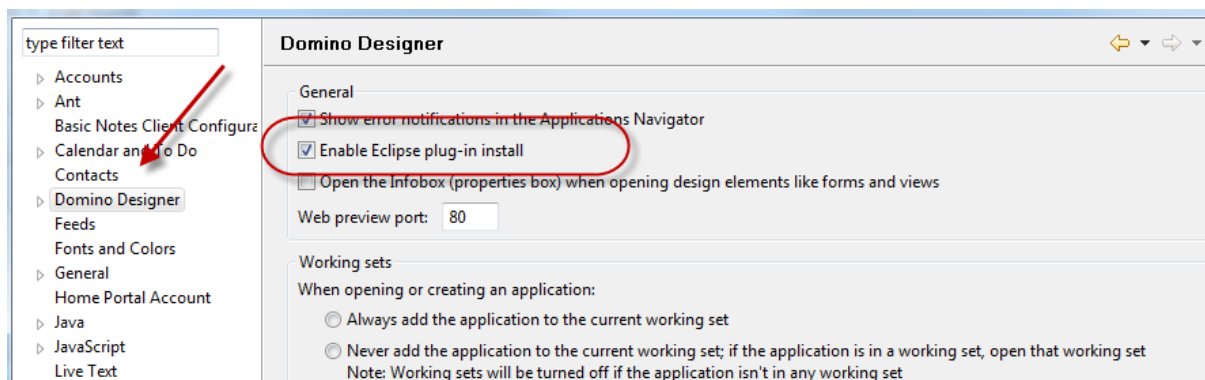


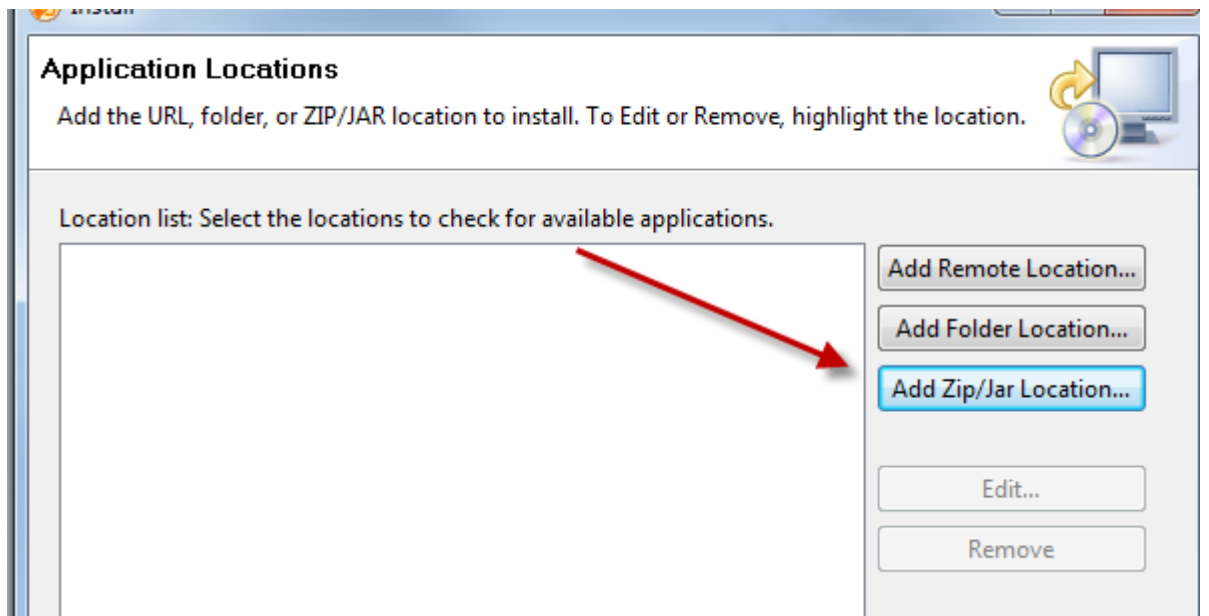
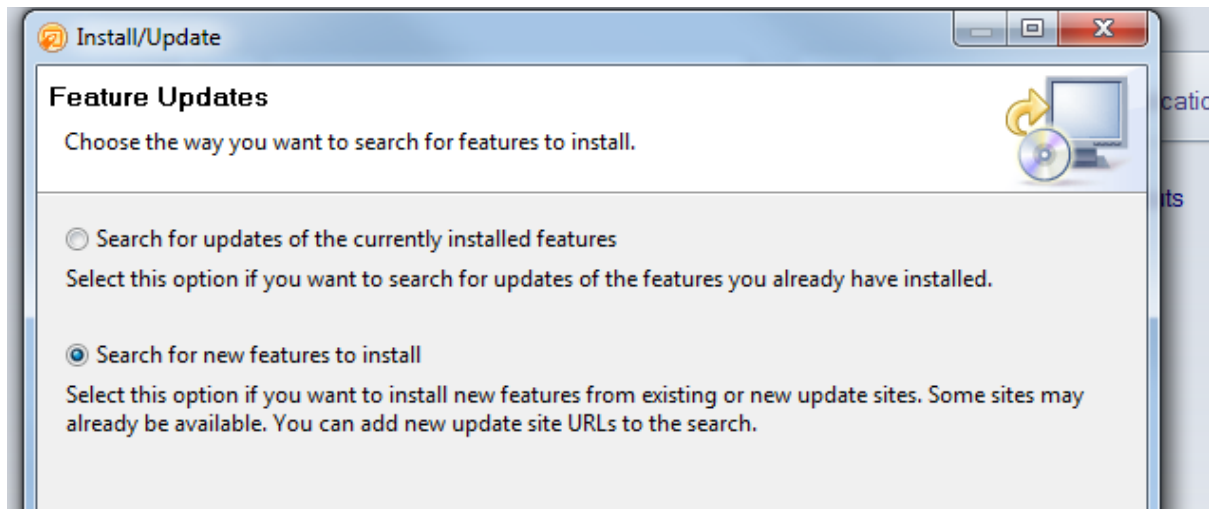
This is a work in progress

How to add Egit to DDE

See => <http://www.seancull.co.uk/public/seancull.nsf/preview/settingupgitorghg.htm>

Sean Cull






Application Locations

Add the URL, folder, or ZIP/JAR location to install. To Edit or Remove, highlight the location.



Location list: Select the locations to check for available applications.

 org.openntf.egit.update.zip

Add Remote Location...

Add Folder Location...

Add Zip/Jar Location...

Edit...

Remove

Import Location...

Export Location...

Ignore features not applicable to this environment

< Back

Next >

Finish

Cancel


Updates

Search Results

Select features to install from the search result list.



Select the features to install:

-  org.openntf.egit.update.zip

Deselect All

More Info

Properties

Select Required

Error Details...

1 of 1 selected.

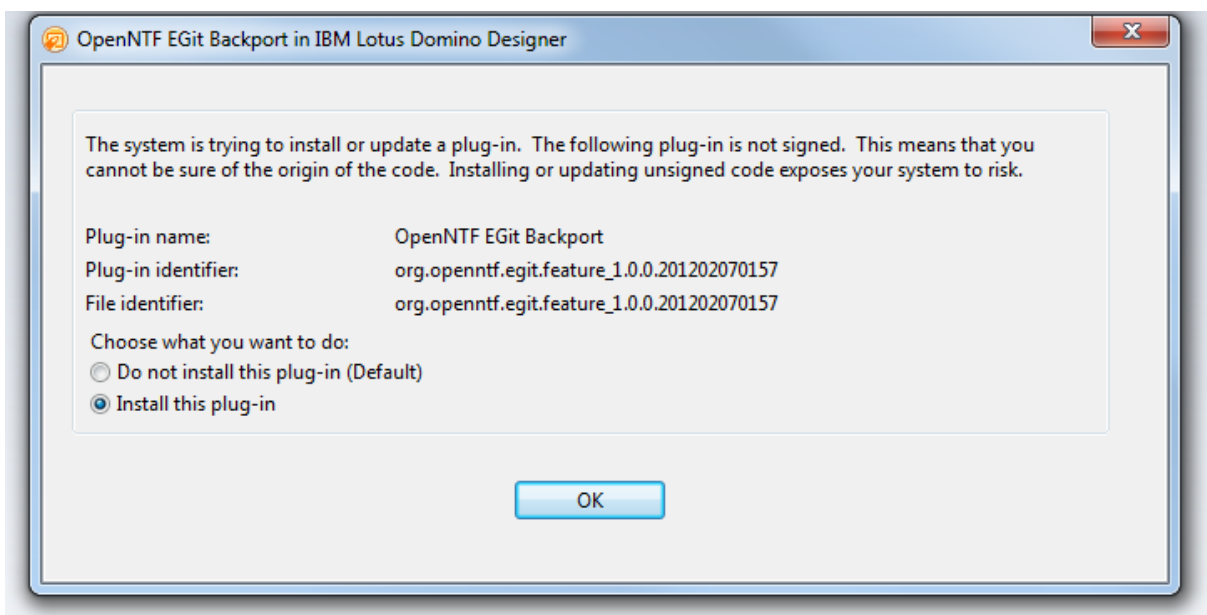
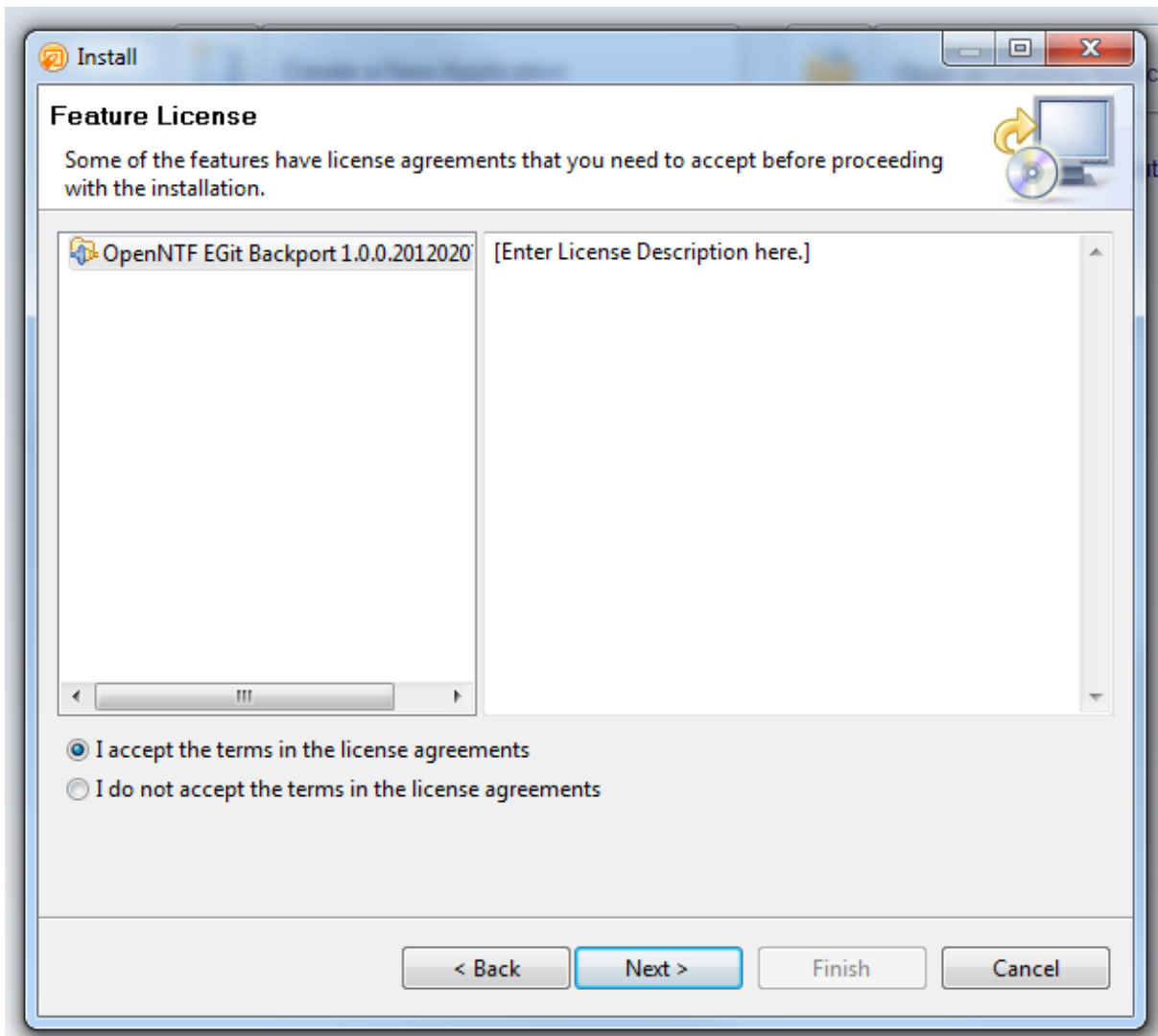
Only show the latest version of a feature per update site

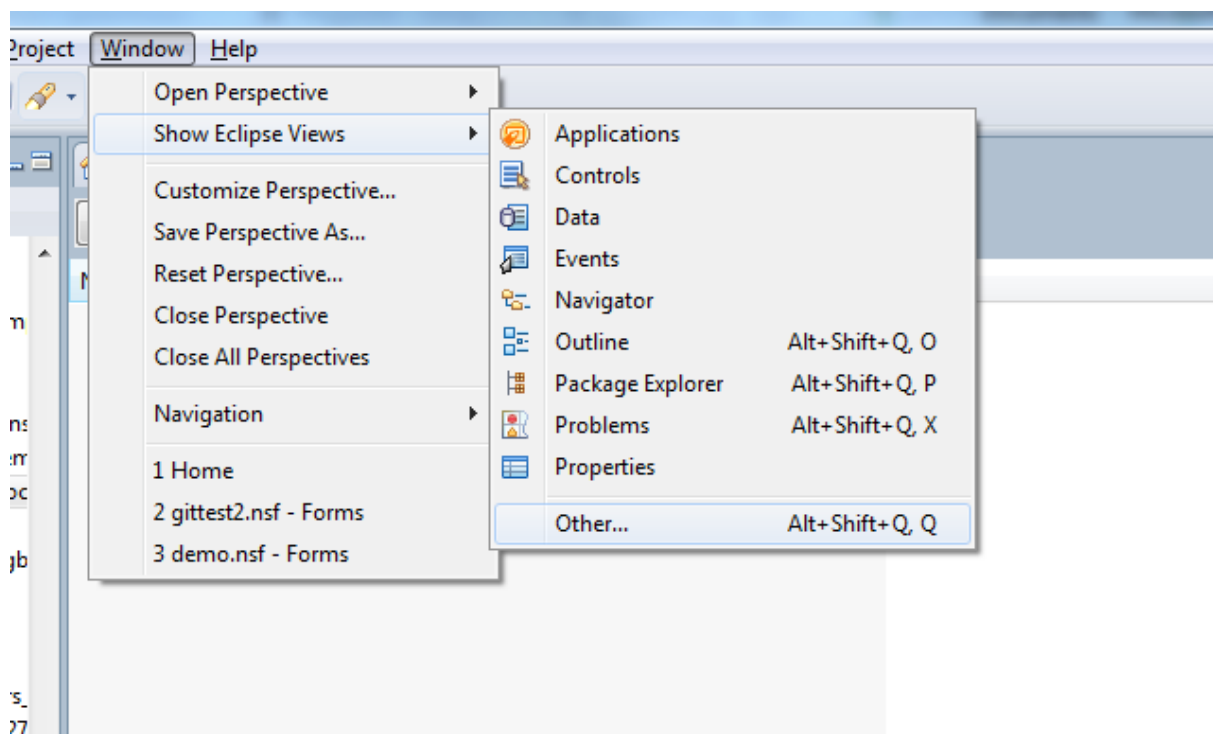
< Back

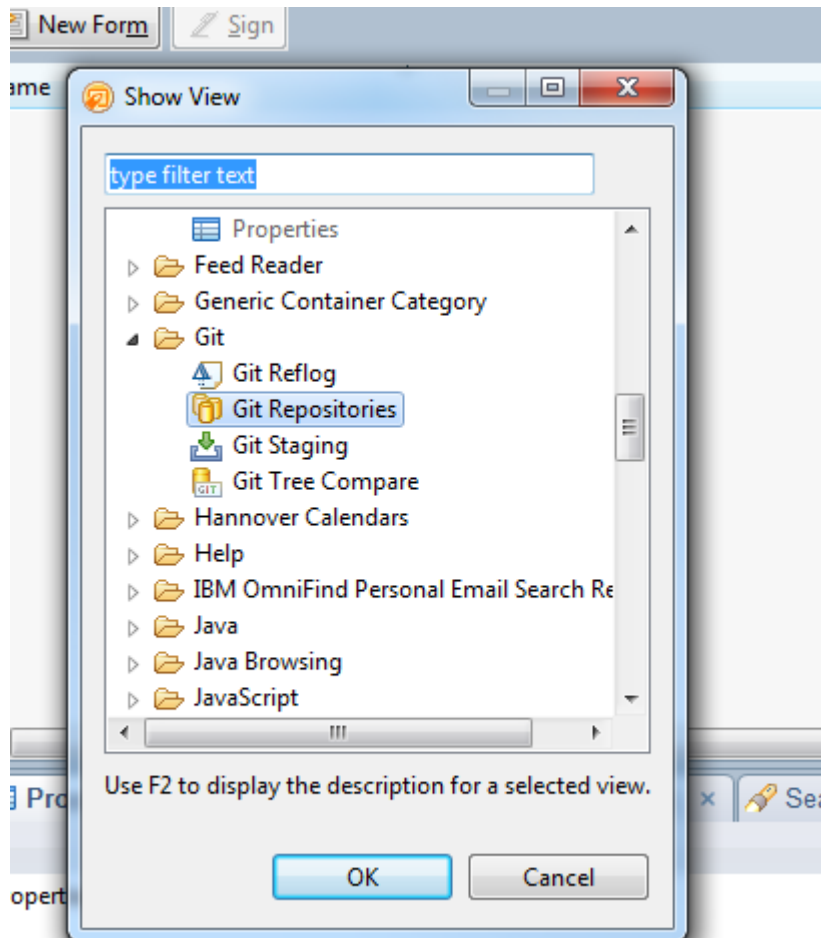
Next >

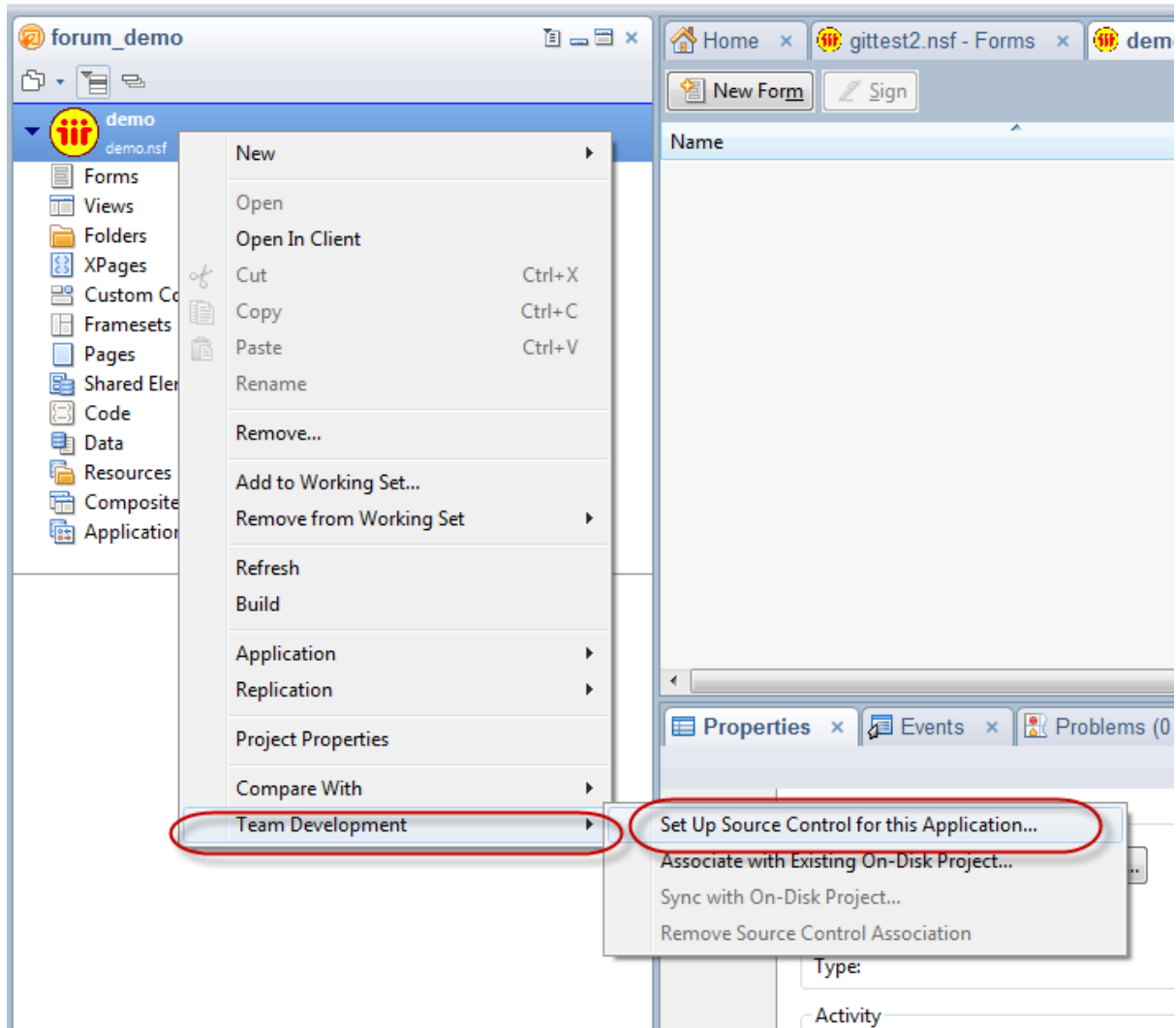
Finish

Cancel









Set Up This Application for Source Control

Get Started with Source Control

To use source control with a Notes application, you must create an on-disk project. The on-disk project is a physical copy of the application (NSF).



1. Create an on-disk project. Domino Designer uses a virtual file system to represent a Notes application as a project in Eclipse. To make the application available to source control, a physical version of the virtual project must be created on the disk. This physical on-disk project also gives the source control system access to individual design elements.



The NSF and on-disk project are automatically kept in sync by default

The on-disk project syncs with the source control repository

2. Use an Eclipse view, such as the Navigator or Package Explorer, to see the on-disk project and perform source control operations on it.

Click Next to create the on-disk project.

Skip this Helper panel in the future

< Back

Next >

Finish

Cancel

Set Up This Application for Source Control

New Project

The on-disk project automatically syncs with the NSF file (by default) and makes individual design elements available to the source control system.

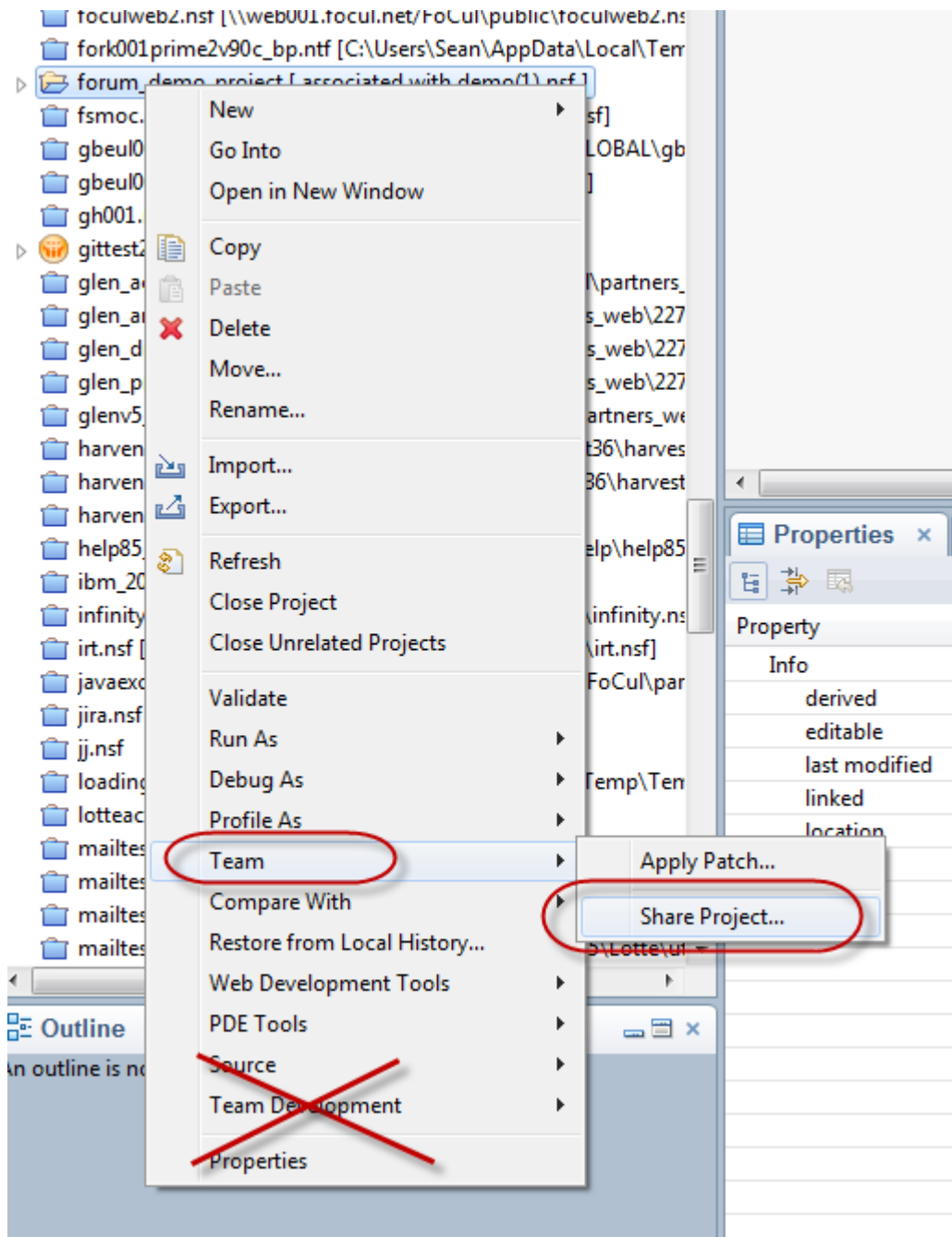
Project name:

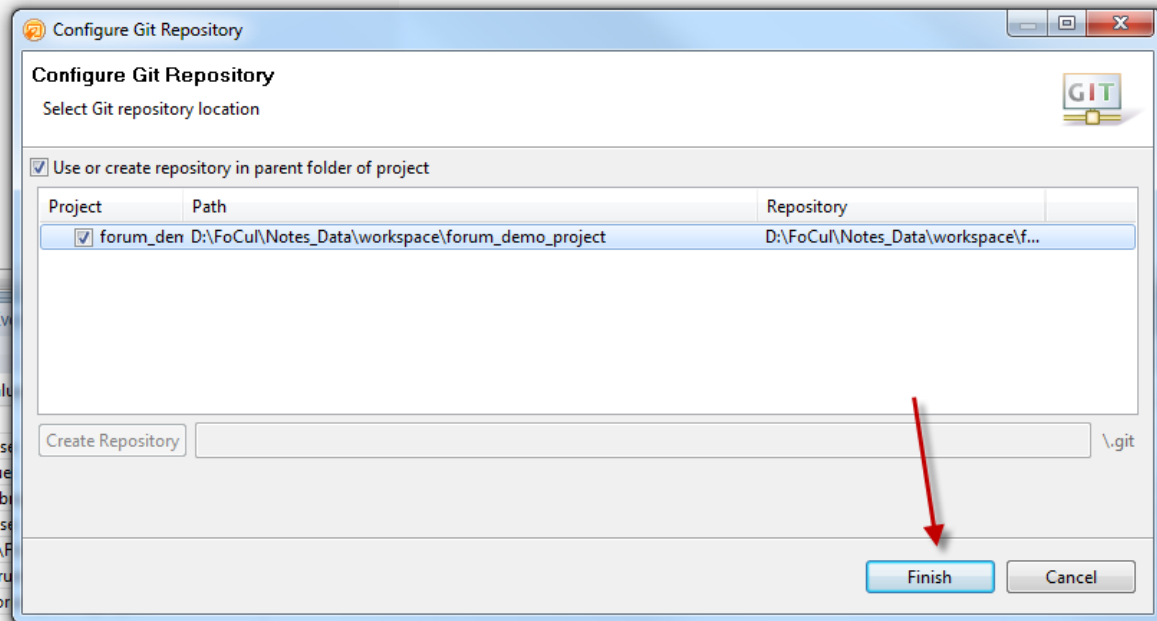
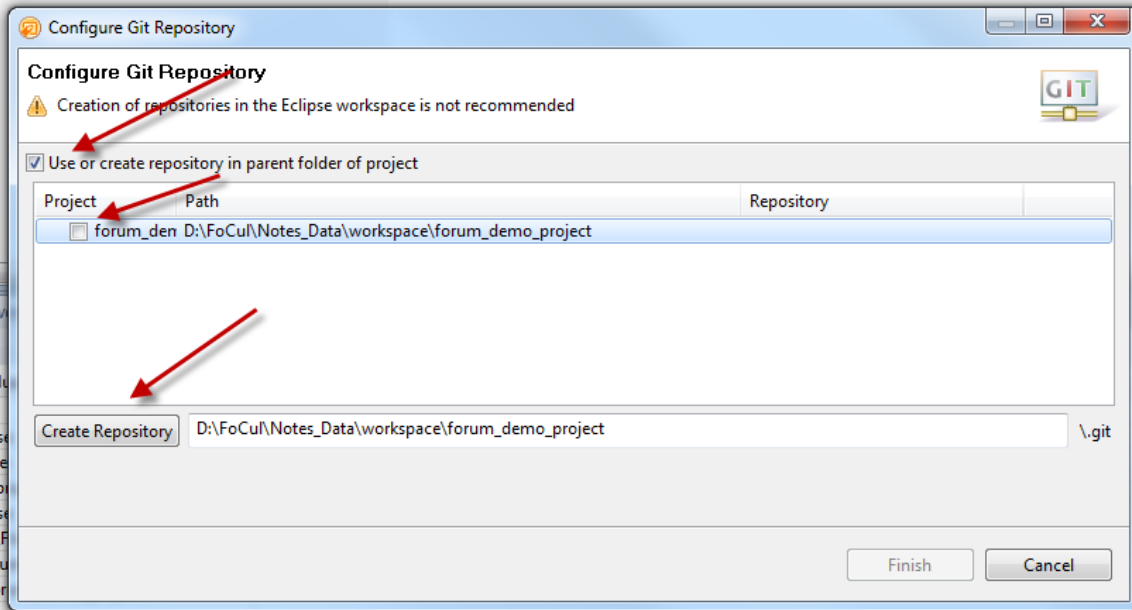
Use default location

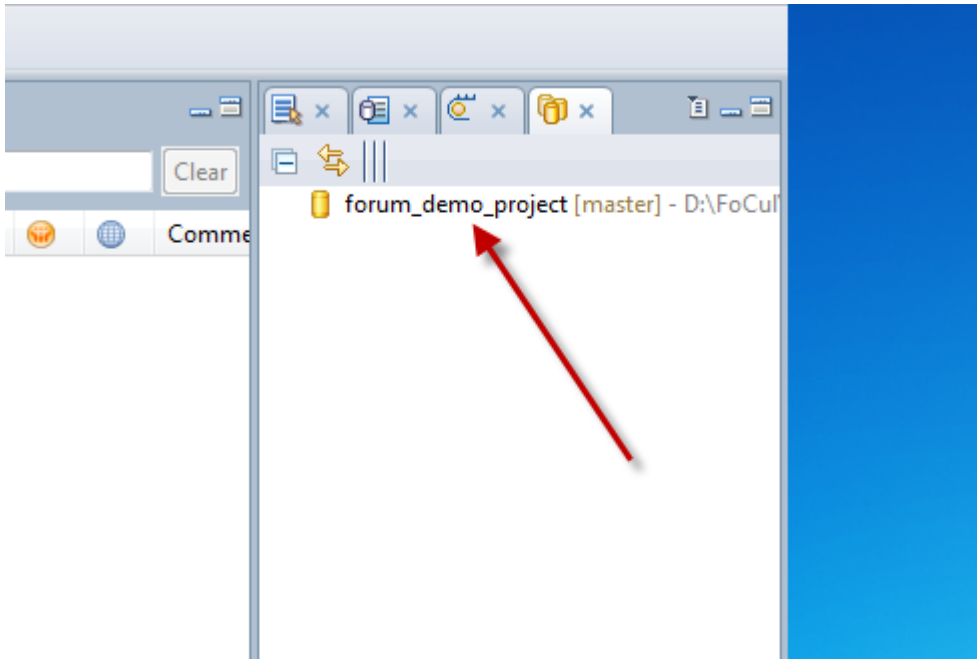
Location:

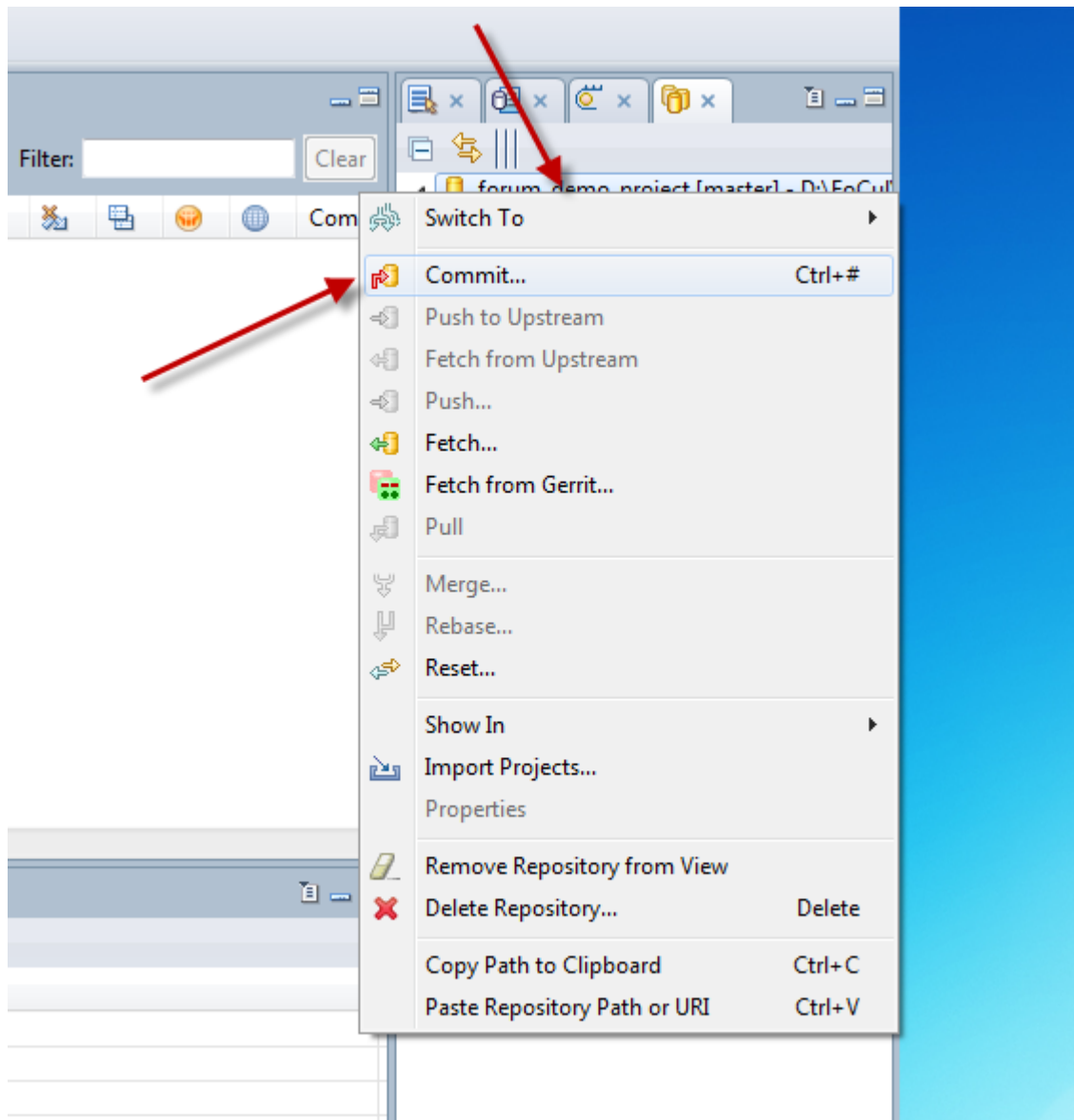
Go to Navigator view after project is created

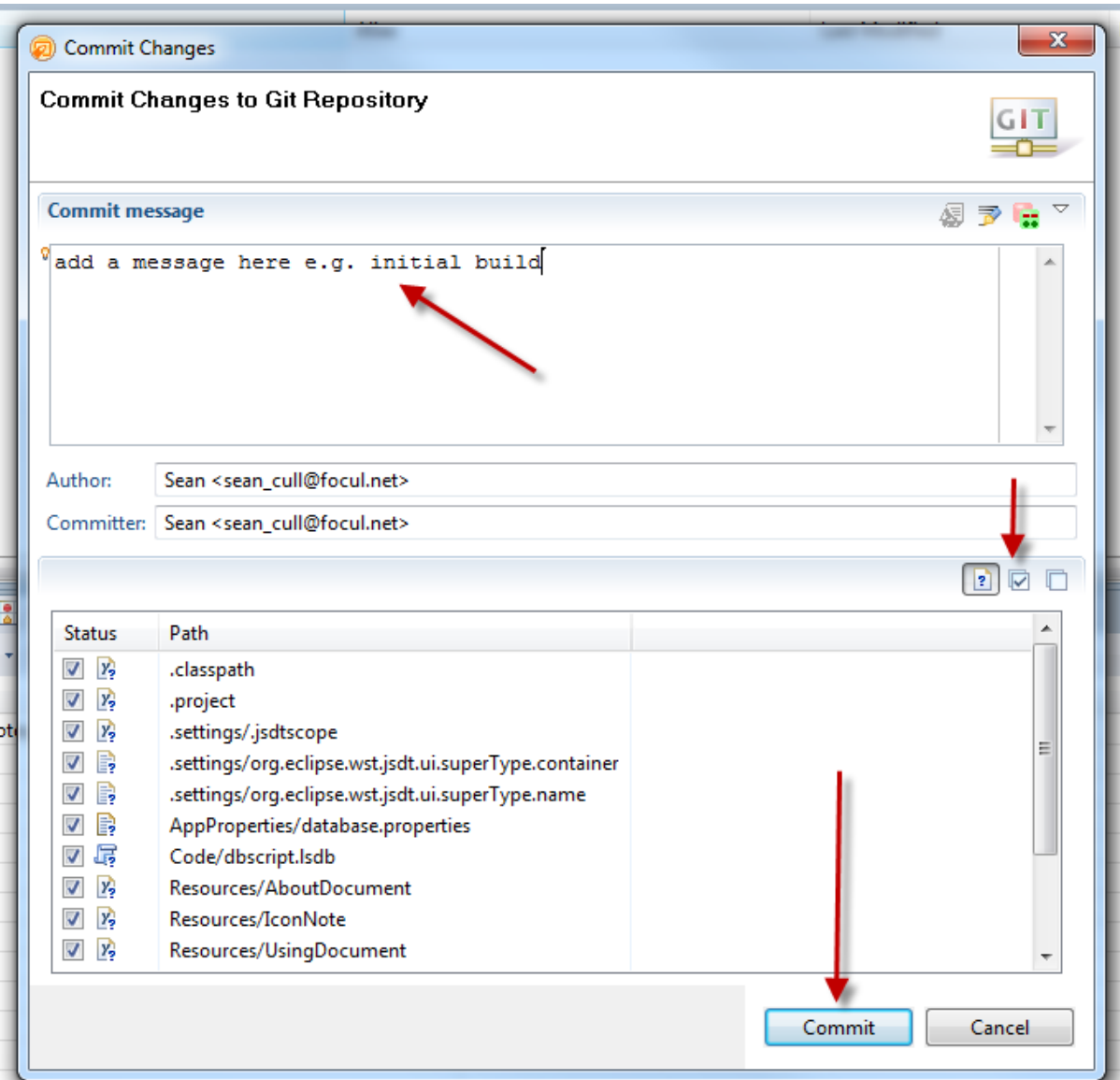
< Back Next > **Finish** Cancel

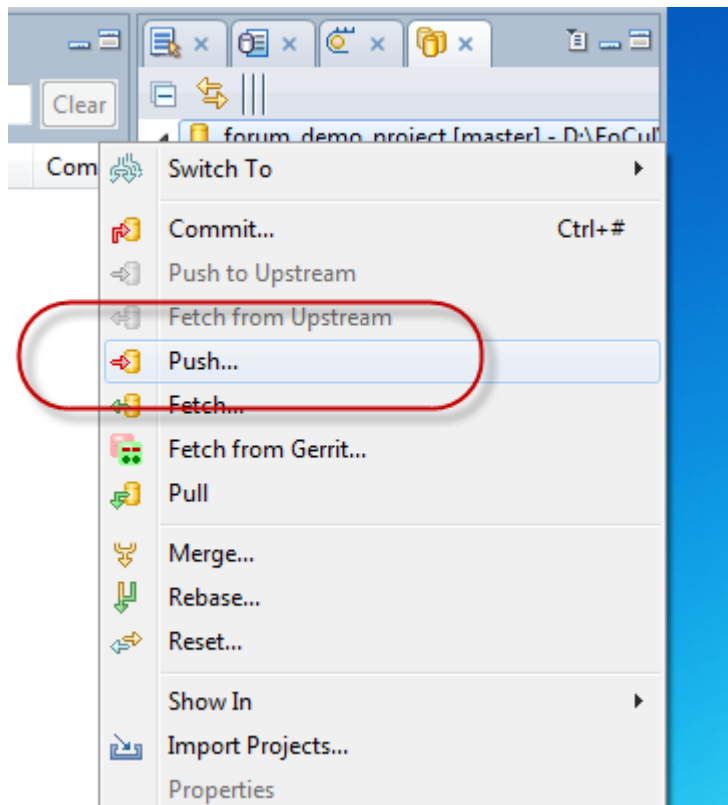


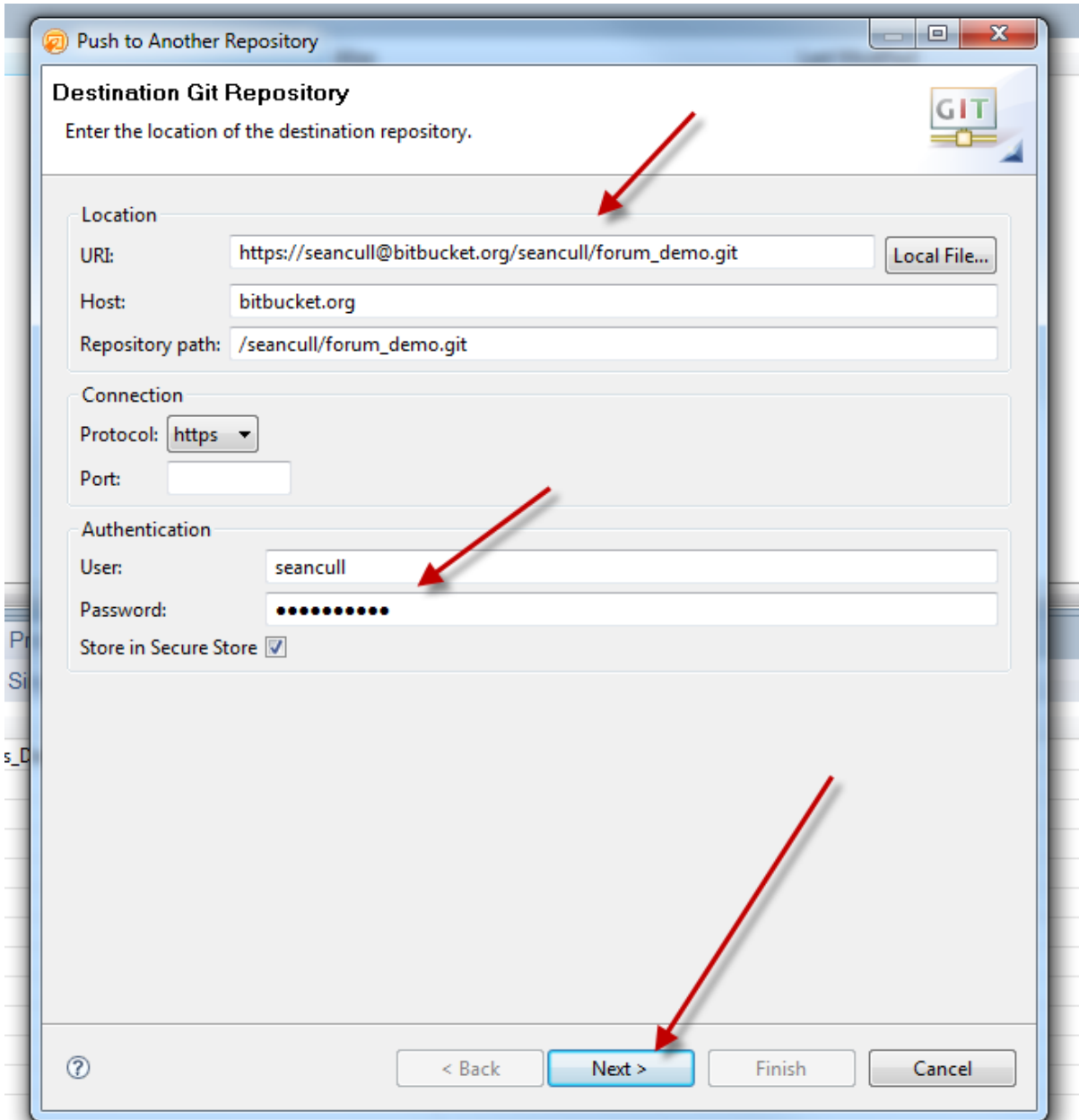












Push to: https://seancull@bitbucket.org/seancull/forum_demo.git

Push Ref Specifications

Select refs to push.



Add create/update specification

Source ref:

refs/heads/master

Destination ref:

refs/heads/master

+ Add Spec

Add delete ref specification

Remote ref to delete: *

X Add spec

Add predefined specification

Add Configured Push Specs

Add All Branches Spec

Add All Tags Spec

Specifications for push

| Mode | Source Ref | Destination Ref | Force Update | Remove |
|----------|-------------------|-------------------|-------------------------------------|--------|
| + Update | refs/heads/master | refs/heads/master | <input checked="" type="checkbox"/> | |
| | | | | |
| | | | | |
| | | | | |
| | | | | |
| | | | | |

Force Update All Specs

X Remove All Specs



< Back


Next >

Finish

Cancel

Push Results: https://seancull@bitbucket.org/seancull/forum_demo.git

Pushed to https://seancull@bitbucket.org/seancull/forum_demo.git

 master: master [new branch]

Message Details

```
Repository https://seancull@bitbucket.org/seancull/forum\_demo.git  
bb/acl: seancull is allowed. accepted payload.
```

OK