

# Migrating from Microsoft® Exchange to IBM® Lotus® Notes® and Domino® 8

***Hansraj Mali***

*Technical Advisor, IBM Software Group  
Lotus Notes/Domino Mail & Messaging Team  
IBM Pune, India*

November 2008

© Copyright International Business Machines Corporation 2008. All rights reserved

**Abstract:** By using the straightforward steps outlined in this white paper, an administrator can easily migrate data and users from Microsoft® Exchange to IBM® Notes® and Domino® 8. Included are tips and instructions for troubleshooting some common issues.

## Contents

1	Introduction.....	3
2	Server-to-server migration steps.....	3
2.1	Prerequisites.....	3
2.2	What to migrate from Microsoft Exchange to Lotus Domino 8.....	3
2.3	Migrating the different elements.....	3
2.3.1	Creating the administrator profile in Outlook.....	4
2.3.2	Migrating users and their mailbox stores.....	7
2.3.3	Migration options.....	11
2.3.3	Address conversion of Exchange migrated users .....	12
2.3.4	Migrating Group documents .....	12
2.3.5	Migrating Public folders .....	15
2.3.6	Migrating shared mailbox stores.....	15
2.3.7	Migrating shared data .....	16
2.4	Troubleshooting server migration issues .....	16
2.4.1	Debug parameters .....	17
3	Client-to-client migration steps.....	19
3.1	Importance of local data migration .....	19
3.2	Prerequisites.....	19
3.3	Migrating local PST files to NSF.....	20
3.4	Troubleshooting client migration issues .....	24
4	Conclusion .....	32
5	Resources .....	32
6	About the author .....	32

# 1 Introduction

This white paper describes the comprehensive steps to migrate Microsoft Exchange to an IBM Lotus Domino 8 server and Lotus Notes 8 client. Also provided are troubleshooting tips for both the server and client migrations.

The Domino server offers two methods of migration:

- **Server-to-server migration with the help of Domino upgrade service (DUS).**  
DUS in the Domino Administrator client allows you to migrate information easily from your existing Microsoft Exchange messaging and directory system to Lotus Domino R8. With DUS, you can import users from the foreign directory, register them as Notes users, and then convert the mail from Microsoft Exchange mail system to a Domino mail database. The migration tool lets you migrate all users and/or selective users from the foreign directory.
- **Client-to-client migration with the help of Notes upgrade service (Nupgrade).**  
Notes Upgrade Services works only with a local Microsoft Outlook Personal Storage (PST) file, creating a local NSF file. There is no need to access the servers and thus no update to the server's primary Domino directory. Although Notes Upgrade Service is designed to migrate Microsoft Exchange data that resides locally in an Outlook PST file, it never accesses the Microsoft Exchange server.

## 2 Server-to-server migration steps

### 2.1 Prerequisites

Before starting the migration, the Domino Administrator must first:

- Ensure workstations that are performing the migration have the Domino Administrator Client installed and the Outlook Client installed.
- Have admin.id and cert.id for the Domino server.
- Have an Administrator profile set up in Outlook for the Microsoft Exchange server.
- Install Microsoft Exchange server as a foreign directory source.

### 2.2 What to migrate from Microsoft Exchange to Lotus Domino 8

Microsoft Exchange contains the following elements that must be migrated to the Domino server:

- Users and user's mail box store
- Group documents
- Public folders
- Shared public folder
- Shared mail box store
- Shared data

### 2.3 Migrating the different elements

Before starting the migration of the elements from Microsoft Exchange to Lotus Domino 8, the administrator must create an administrator profile in Microsoft Office Outlook and install Microsoft Exchange as the foreign directory source, per the following guidelines:

### 2.3.1 Creating the administrator profile in Outlook

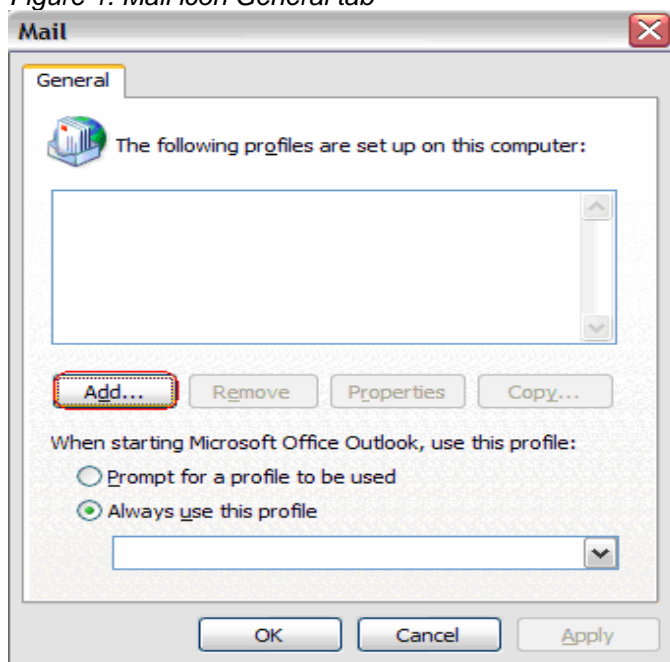
To migrate users from Microsoft Exchange, you must first connect to the Microsoft Exchange server that is storing the mail files that you want to migrate. To do this, select the Administrator mail profile for the Microsoft Exchange server from which you want to migrate users and their associated mail files.

The Administrator account must have the Administrator role for the Microsoft Exchange site and server, which gives you full access to all accounts and all mailboxes in the Microsoft Exchange server.

Now, follow these steps to create an Administrator profile in Outlook:

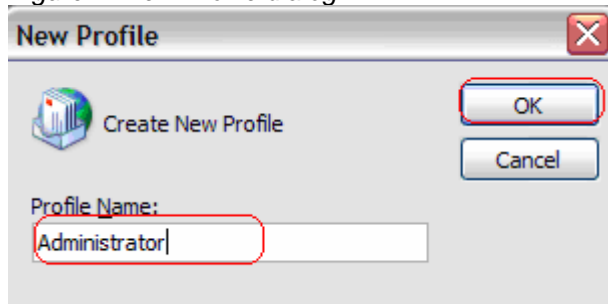
1. Go to Control Panel, click the mail icon, and click the Add button (see figure 1).

Figure 1. Mail icon General tab



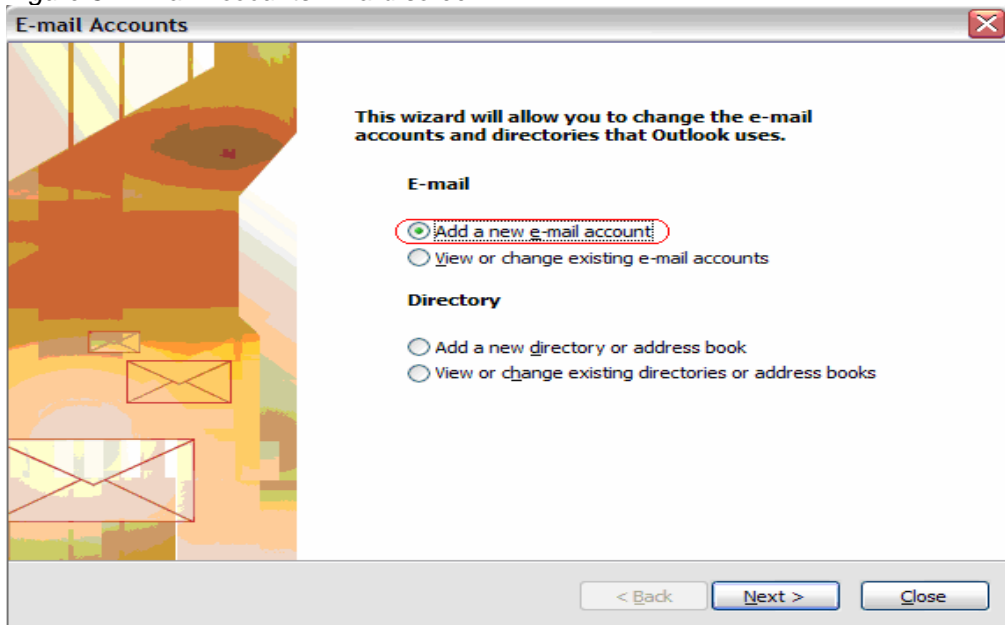
2. Enter "Administrator" in the Profile Name field and click OK (see figure 2).

Figure 2. New Profile dialog



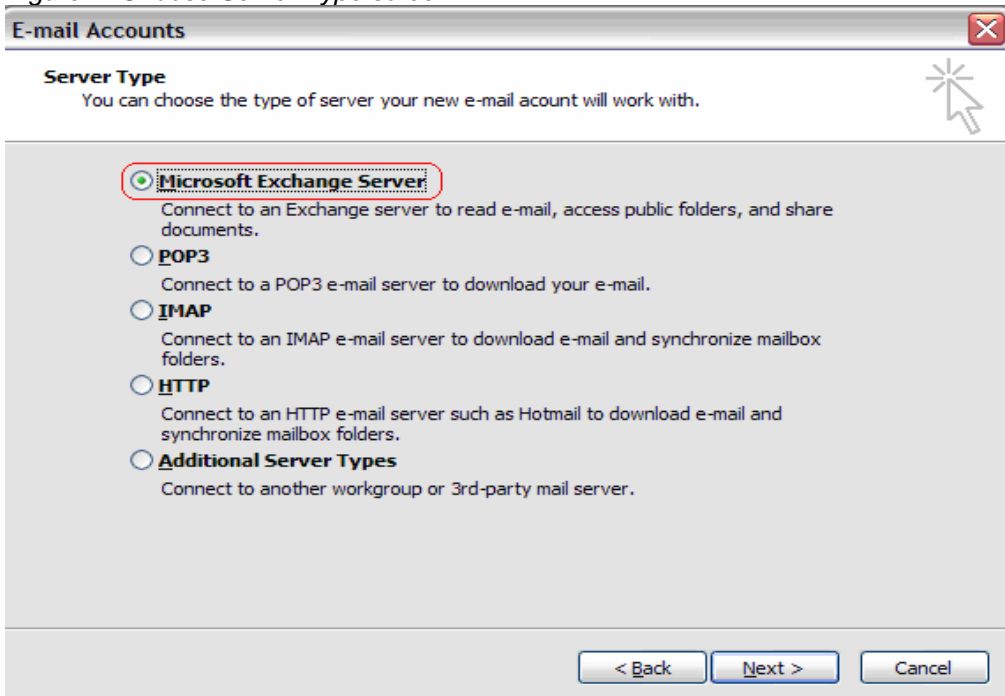
3. Select "Add a new email account" (see figure 3).

Figure 3. E-mail Accounts wizard screen



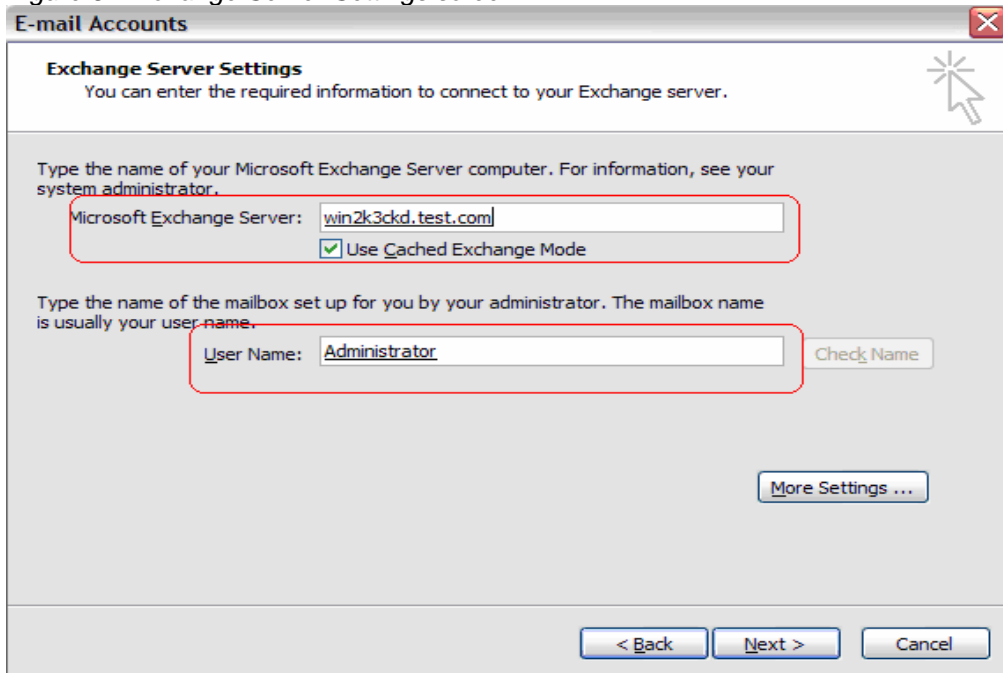
4. In the next screen (see figure 4), select Microsoft Exchange Server.

Figure 4. Choose Server Type screen



5. Enter the name of your Microsoft Exchange Server and enter "Administrator" in the User Name field, as shown in figure 5.

Figure 5. Exchange Server Settings screen

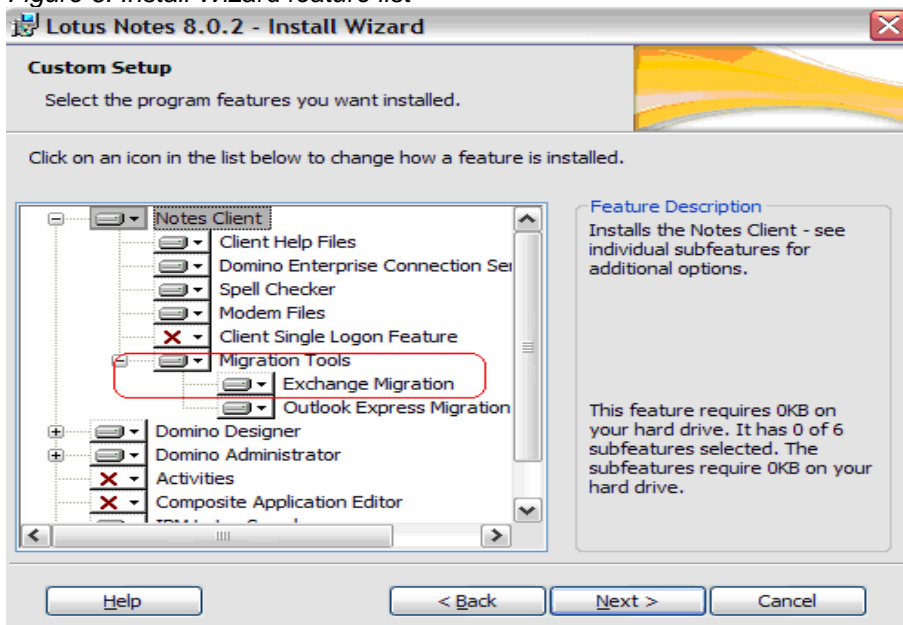


6. Click Next and then click Finish.

### Installing Microsoft Exchange Server as foreign directory source

To gain access to the Microsoft Exchange directory, the Lotus Notes client must have the Microsoft Exchange migration tool enabled. To do this, while you are installing the Lotus Notes client, enable Exchange Migration under the Migration Tools feature option, as shown in figure 6 (and cited in the Prerequisites section above). You can always modify it later.

Figure 6. Install Wizard feature list



## 2.3.2 Migrating users and their mailbox stores

Once you have completed the prerequisites, you can start migrating users from Microsoft Exchange Server to Lotus Domino, following these steps:

1. Start the Domino Administrator client and log in with your Domino Admin ID.
2. Select the Domino server to which you want to migrate Microsoft Exchange users.
3. Go to the People and Groups tab, select People from right-hand menu, and click Register.
4. Click the Migrate People button (see figure 7).

Figure 7. Register Person screen

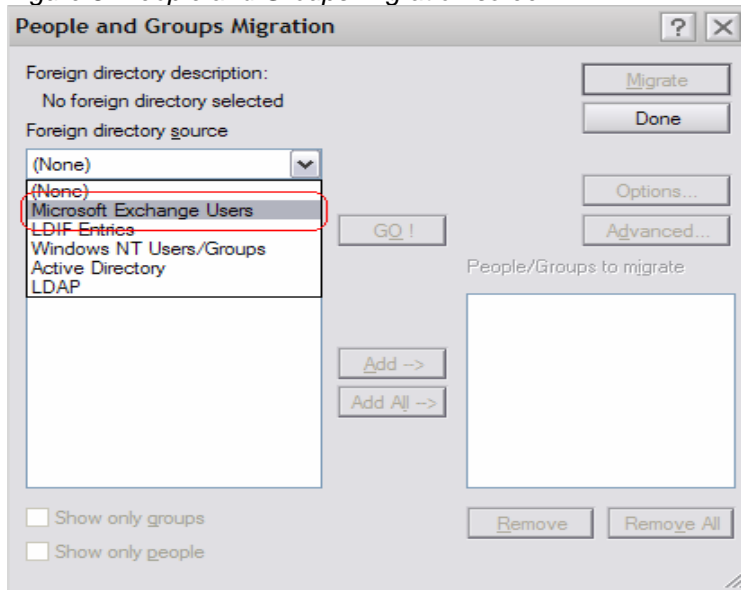
The screenshot shows the 'Register Person -- New Entry' dialog box. The 'Basics' tab is active, displaying the following fields and options:

- Registration Server: domino8/acme
- First name: [Empty]
- Middle name: [Empty]
- Last name: [Empty]
- Short name: [Empty]
- Password: [Empty]
- Mail system: Lotus Notes
- Explicit policy: (None Available)
- Enable roaming for this person:
- Create a Notes ID for this person:
- Buttons: New Person, Migrate People... (highlighted), Import Text File...

The 'Advanced' tab is also checked. Below the main form is a 'Registration Queue (local):' table with columns for User Name, Registration Status, and Date. The table is currently empty.

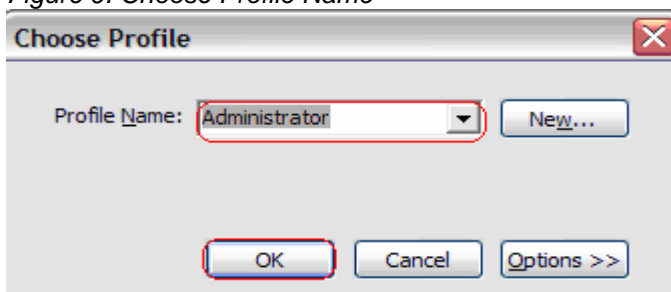
5. In the next screen, select Microsoft Exchange Users from the Foreign directory source drop-down list (see figure 8).

Figure 8. People and Groups Migration screen



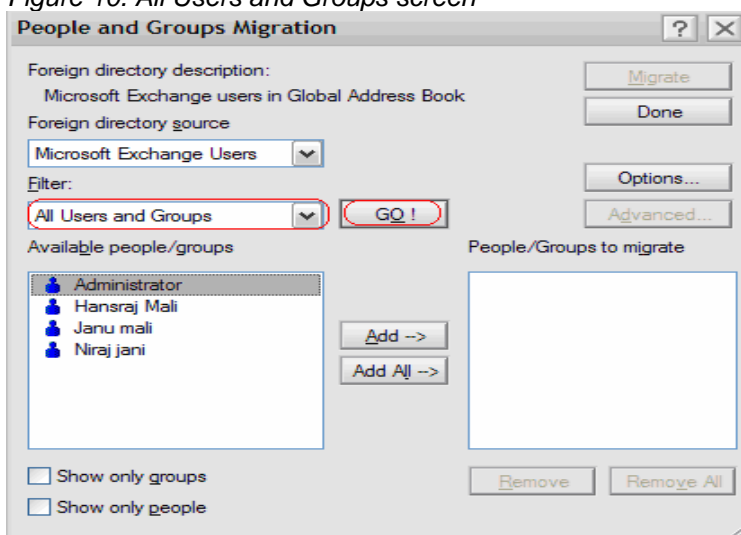
6. Select Administrator from the Profile Name drop-down box and click OK (see figure 9).

Figure 9. Choose Profile Name



7. Select All Users and Groups in the Filter drop-down box and click GO!; all existing (available) users should then display (see figure 10).

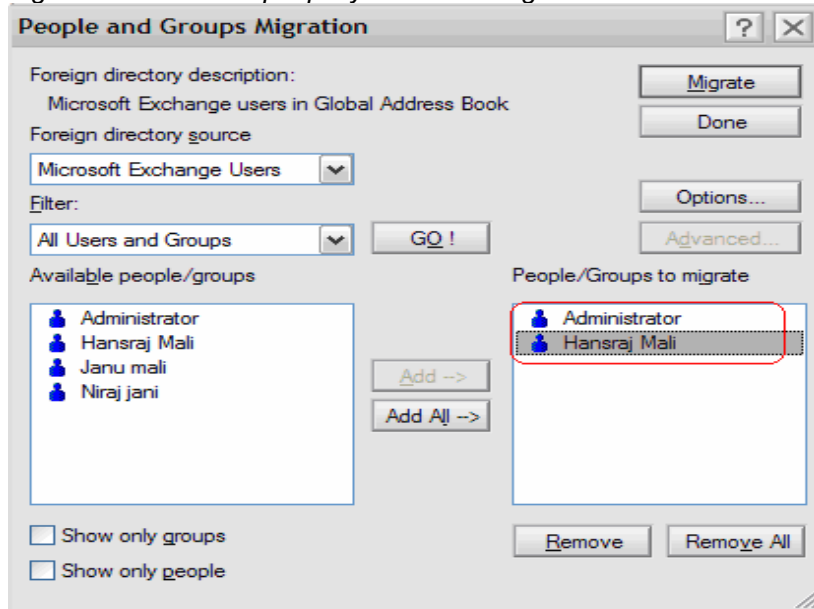
Figure 10. All Users and Groups screen



**NOTE:** If you receive a “MAPI Logon failed” error message after clicking the GO button, refer to the Troubleshooting section below for tips on analyzing the error.

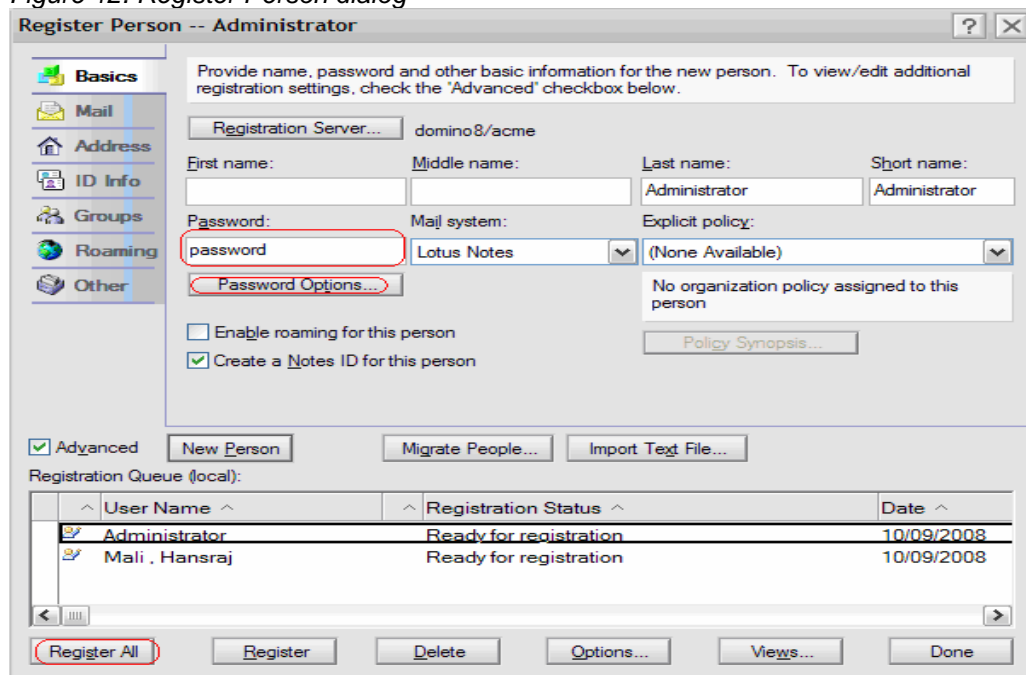
8. Select individuals from the People/Groups to migrate list or click the Add All button to migrate the desired users from Microsoft Exchange Server to Lotus Domino (see figure 11).

Figure 11. Select the people you want to migrate



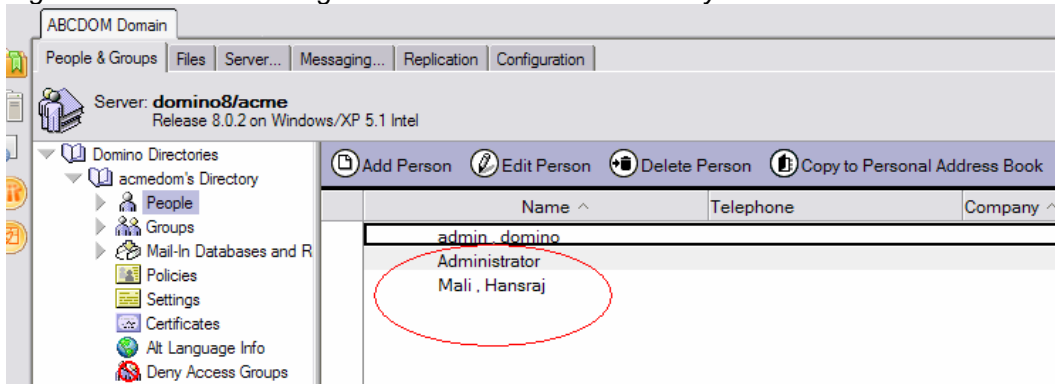
9. On the next screen, click Migrate; in the Register Person dialog that displays (see figure 12), set the password and password quality scale, and then click the Register All button at the bottom.

Figure 12. Register Person dialog



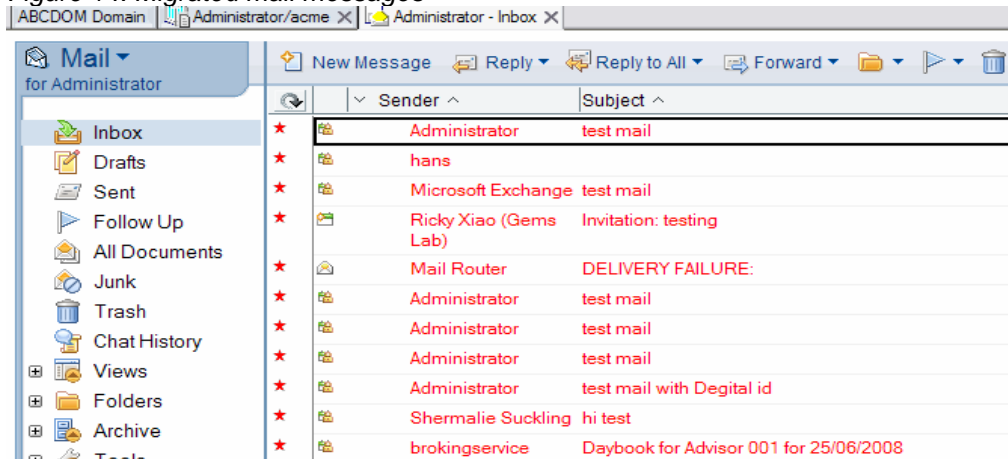
DUS registers users in the Domino directory and converts the mail box store from Microsoft Exchange to Lotus Domino, and now you can see Microsoft Exchange users in the Domino Directory (see figure 13).

Figure 13. Former Exchange users now in Domino Directory



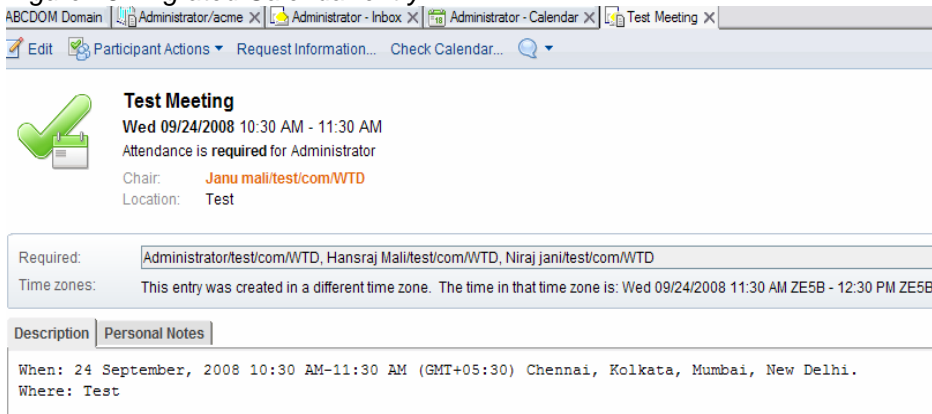
10. Open a Microsoft Exchange user's mail file from the Notes client; you should see mail messages migrated from Microsoft Exchange to Domino, as shown in figure 14.

Figure 14. Migrated mail messages



11. Also, figure 15 shows a Calendar entry in Lotus Domino migrated from Microsoft Exchange.

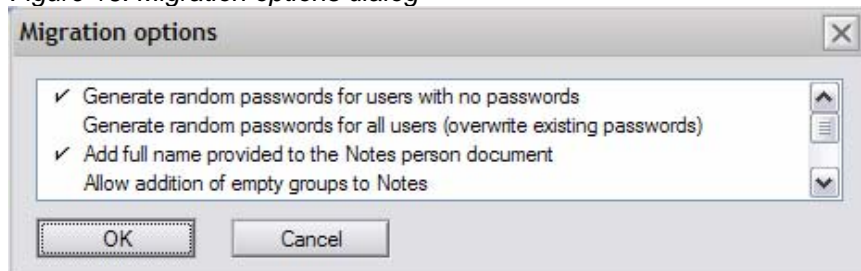
Figure 15. Migrated Calendar entry



### 2.3.3 Migration options

Migration options allow you to change the default settings for migration, as follows (see figure 16):

Figure 16. Migration options dialog

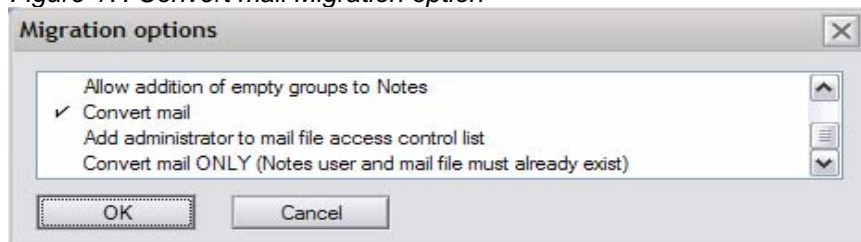


**Generate random passwords for users with no passwords.** This option is used to generate random passwords for Microsoft Exchange users to be registered in the Domino directory. This option and the “Generate random passwords for all users (overwrite existing passwords)” option are mutually exclusive.

**Add full name provided to the Notes person document.** The User name field of a Person document contains one or more full names by which a user is known in Domino. For a registered user the first name listed in this field, the primary Notes name is a hierarchical name based on the certifier ID used to register the user. The same name is checked when authenticating a user's right to access Domino resources.

**Convert mail.** If you choose the Convert mail option (see figure 17), during the registration process the Domino Migration Tool creates a new Domino mail file for the user in question. The tool then converts data from the mail file on Microsoft Exchange Server to the new Domino mail file automatically.

Figure 17. Convert mail Migration option



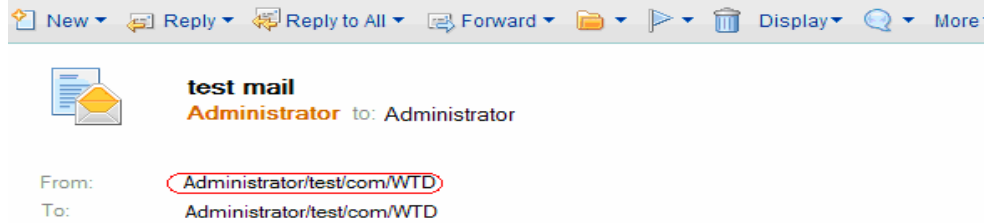
**Add Administrator to mail file access control list.** When you create a mail file for a user during migration, by default, your Domino administrator ID is placed temporarily in the ACL of the new mail file and is assigned Manager access. After the migration completes and the migrated user is successfully registered in Lotus Domino, the Administrator ID is removed from the ACL and is replaced with the name of the mail file owner. At this point, only the mail file owner can open the mail file.

**Convert mail ONLY.** Select this option if a user has already been registered and a Notes ID has been created for the user on the Domino server. In contrast to the Convert mail option, when this option is selected, no mail file is created for the user in question. However, data from the mail file on Microsoft Exchange Server is converted to the user's existing Domino mail file.

### 2.3.3 Address conversion of Exchange migrated users

When users who migrate from Microsoft Exchange to a Domino server that contains a WTD (Welcome to Domino) string in Notes address (see figure 18), that string must be removed after migration is complete.

Figure 18. Before convert command

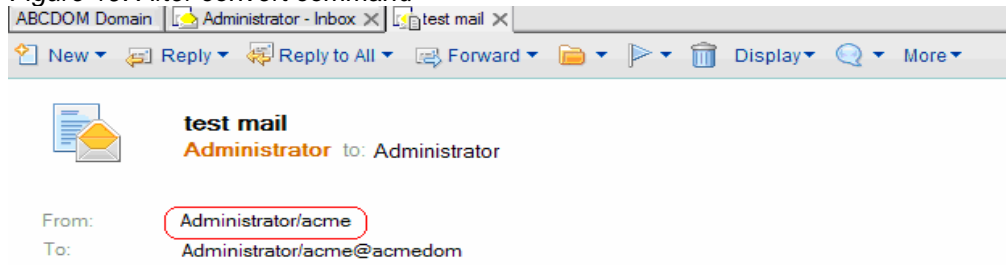


To do this, the Domino Administrator must run the updall command on the Domino directory database (Names.nsf) to update the migrated user's Person document, and then run the convert command on the user's mail file to update their address to Notes canonical format (see figure 19):

```
Load updall names.nsf
```

```
Load convert -w mail*.nsf [-w specifies conversion of Microsoft Exchange addresses only]
```

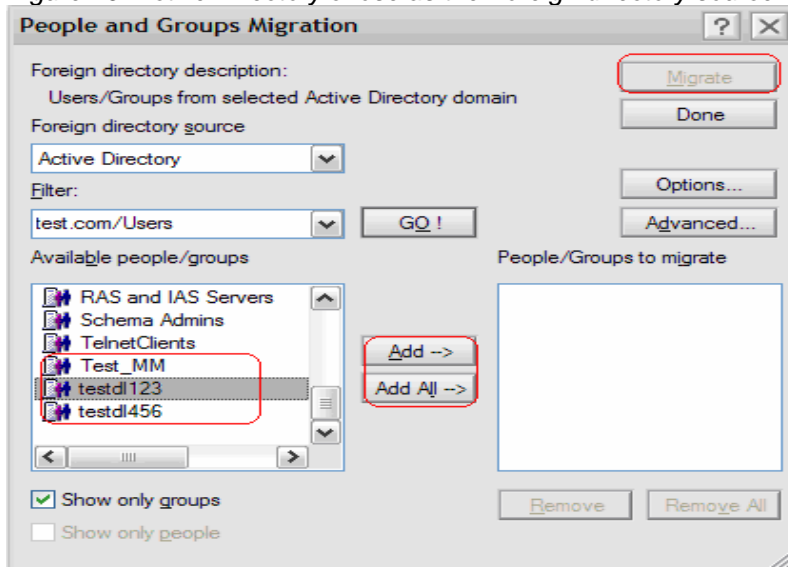
Figure 19. After convert command



### 2.3.4 Migrating Group documents

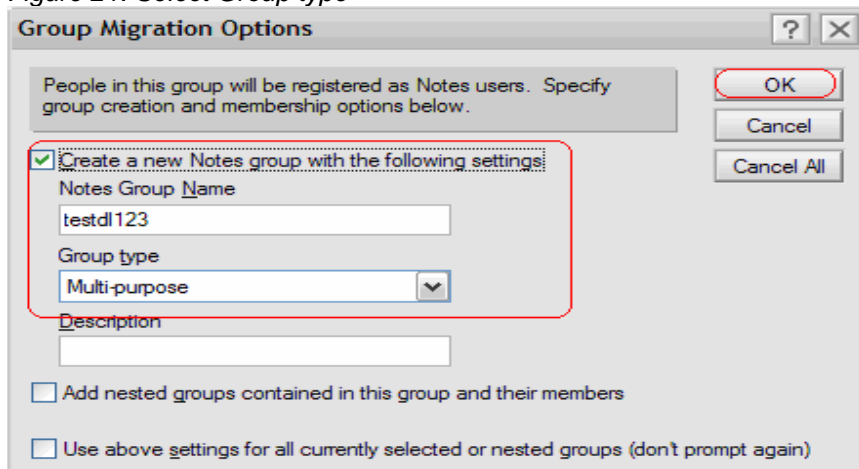
The best way to migrate the distribution list (DL) from Microsoft Exchange Server to the Domino server is to select Active Directory as the Foreign directory source while migrating Group documents (see figure 20). Note that your workstation should be a member of Windows® domain controller.

Figure 20. Active Directory chose as the Foreign directory source



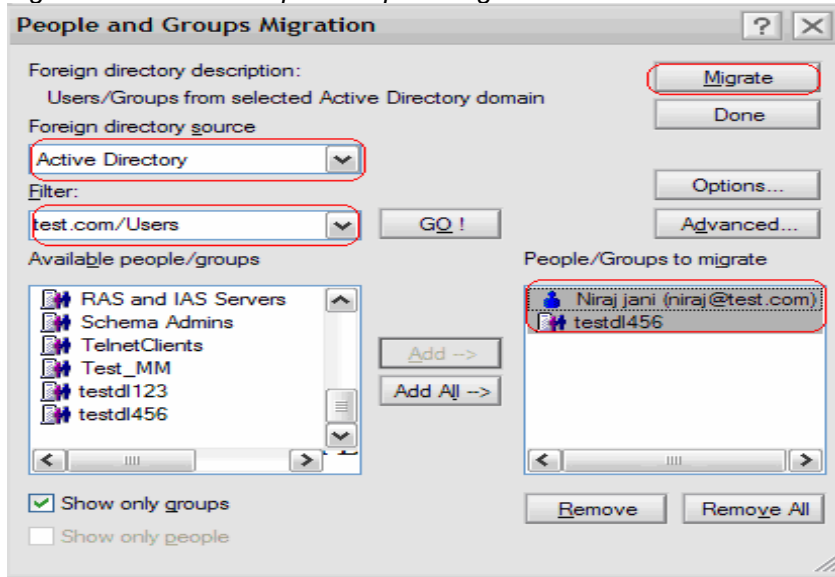
1. Select the groups for migration and click Add; in the Group Migration Options dialog, select the Group type and click OK (see figure 21).

Figure 21. Select Group type



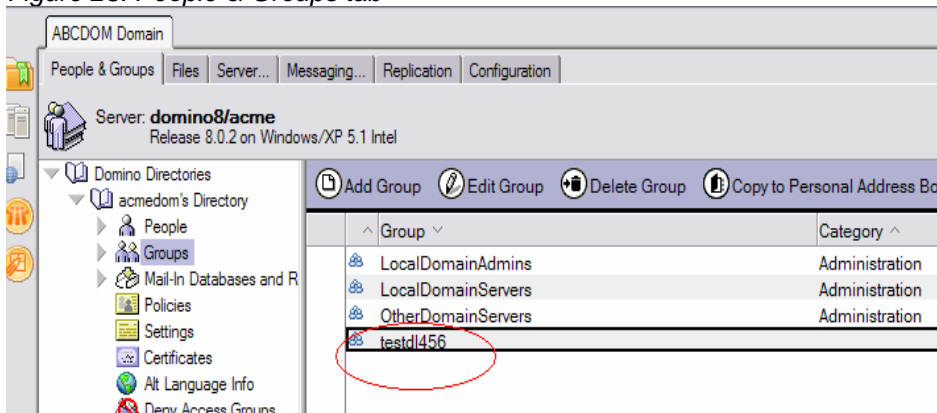
2. Add all the DLs and then click the Migrate button (see figure 22).

Figure 22. Choose People/Groups to migrate



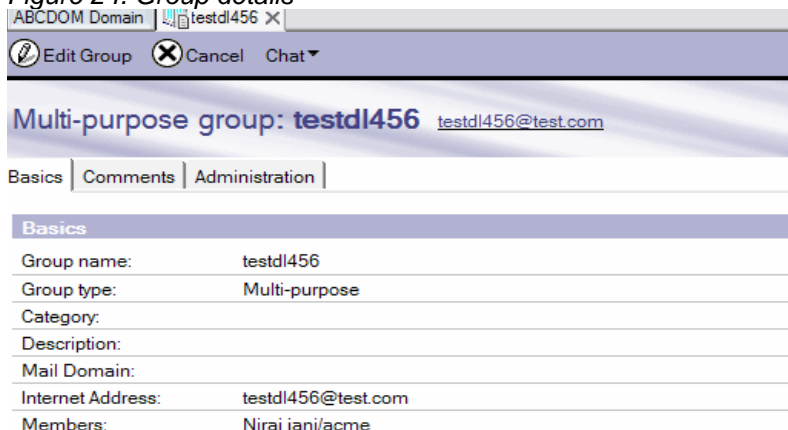
- Migration of groups is now complete. You can see them under the People & Groups tab of the Domino Directory (see figure 23).

Figure 23. People & Groups tab



- You can also see the group details (see figure 24).

Figure 24. Group details



### **2.3.5 Migrating Public folders**

Public folders are a collection of shared information. A user's data contains many forms, calendar entries, project details, activities, contacts, tasks, email etc. Some of this data can be private and relevant only to a single user; however, some data can be useful to a group of users or to the entire organization. Thus, the full potential of this data is only realized when it is shared.

Traditional and commonly used methods for sharing data are using a shared disk or using a networked file system. A more recent method of sharing data would be through document management systems.

Public folders that are built into current releases of Microsoft Exchange (2000, 2003, and 2007) provide an additional and simple repository for this information that is accessible through Outlook. In most instances they are used to store shared calendars, files, contacts, and global email messages. Some are open to the entire organizations or limited to a group of individuals.

To migrate Public folder data manually using DUS, follow these steps:

1. Create a Microsoft Exchange mailbox. Ensure that the account that you use for the migration has full access rights to the mailbox.
2. Connect the mailbox to your Outlook Profile.
3. Copy the Public folder information into the new empty mailbox.
4. Check the quality of the data.
5. Migrate the mailbox using DUS.
6. Review and manage the migrated data in the new database.

Outlook contact information is another common Microsoft Exchange Public folder. You can forward all shared contact as vCards to Lotus Notes users, and Lotus Notes can import vCards into a Personal address book. To migrate a Contacts Public folder, follow these steps:

1. Open Outlook and select the Contacts Public folder.
2. Press Ctrl + A (to select all).
3. Select Actions > Forward as vCard (forward to Lotus Notes users.).
4. Select all the vCards, using Edit > Select All).
5. Click Save and place the files in a holding directory.
6. Create a new Personal address book.
7. Go to File Import, select all vCards, and import into the Personal address book.

### **2.3.6 Migrating shared mailbox stores**

For the purposes of migration, you can treat shared mailboxes the same as any other user account. However, additional steps are required during the migration, regardless of the tool used.

Follow these steps to review the current access to the shared mailbox:

1. Open Active Directory users and computers.
2. Select the shared mailbox user account.
3. Right-click and select Properties.
4. Click the Security tab.
5. Take note of the users who are granted access and their level of access.

After migration, follow the steps below to provide access on shared mailbox stores:

1. Right-click the database.
2. Select Manage ACL.

3. Add the users you noted above with their respective access level.
4. If the database is to be mail enabled, add it to Domino's mail-in database list.

### 2.3.7 Migrating shared data

DUS takes data from a Microsoft Exchange mailbox and copies it to a Domino database (mailbox). By default, when you migrate user data, none of the shared folders are migrated, and all permissions on shared folders are lost. If it is deemed necessary to migrate this data to a shared source, then you can follow the procedures in this section to do so.

If we copy all shared data into an intermediary mailbox folder, we can migrate using the DUS. Our objective then becomes getting the data into a mailbox to migrate and gathering information about the shared folder permissions.

Here are the steps to perform the migration itself:

1. Gather information about shared folders and user permissions.
2. Create a Microsoft Exchange mailbox. Ensure that the account that you use for the migration has full access rights to the mailbox.
3. Connect the mailbox to your Outlook Profile.
4. Copy the shared data information into the new empty mailbox.
5. Check the quality of the data.
6. Migrate the mailbox using DUS.
7. Review and manage the migrated data in the new database.

## 2.4 Troubleshooting server migration issues

If you encounter any issues during migration, first check the following for initial troubleshooting before enabling debug parameters for in-depth analysis of the issue:

- You have required permission for Microsoft Exchange mailbox store migration.
- You have the correct Domino Admin ID and cert.id.
- Check Miscellaneous Events under the local log.nsf for any error messages.

If you receive a "MAPI logon failed" error message while retrieving users from the Exchange directory, here are the details of its cause and steps to resolve it:

The complete text of the error is:

*"The upgrade application "Microsoft Exchange Users" returned this error: **MAPI logon failed.**"*

Clicking OK in the error dialog generates another error message:

*"No people are available from the current upgrade application."*

Click OK again; it returns to the migration dialog box.

The issue is caused by selecting "Use Cached Exchange Mode" while creating the Administrator Profile in Outlook. You can resolve it as follows:

1. On the Tools menu, click E-Mail Accounts, select View or change existing e-mail accounts, and then click Next.
2. In the "Outlook processes e-mail for these accounts in the following order" list, click the Exchange Server e-mail account, and then click Change.

3. Under Microsoft Exchange Server, clear the Use Cached Exchange Mode check box.
4. Exit and restart Outlook.

### 2.4.1 Debug parameters

You can enable the debug parameters below by entering them in the Notes.ini file located on the workstation from which the migration is performed. Here are the details of debug values and sample output:

DebugExchangeMigration=<value>

(NOTE: The value of this parameter can be set to 1, 2, or 3)

Debug\_Outfile=<path to debug.txt>

#### Sample Debug output:

##### DebugExchangeMigration=1

```
10/14/2008 11:46:40 AM Event Monitor started
Config(): Item not present:ProbPlacementThreshold
Config(): Item not present:ProbPlacementThreshold
10/14/2008 11:46:59 AM A public key could not be found in the Domino Directory for the
following administrator: CN=Admin802 Domino/O=lotus
10/14/2008 11:47:07 AM The upgrade application 'LDIF Entries' returned this error: LDIF_DUS:
User LDIF Import Operation.
10/14/2008 11:47:14 AM The upgrade application 'Microsoft Exchange Users' returned this error:
MAPI logon failed.
10/14/2008 11:47:21 AM The upgrade application 'Microsoft Exchange Users' returned this error:
Address book restriction failed.
10/14/2008 11:51:27 AM A public key could not be found in the Domino Directory for the
following administrator: CN=Admin802 Domino/O=lotus
10/14/2008 11:52:20 AM The upgrade application 'Microsoft Exchange Users' returned this error:
MAPI logon failed.
10/14/2008 11:53:04 AM The upgrade application 'Microsoft Exchange Users' returned this error:
Address book restriction failed.
10/14/2008 11:57:40 AM Notifying the current DUS (Domino Upgrade Services) application that
registration is about to begin...
10/14/2008 11:57:52 AM Registration completed. Now converting mail file for test user...
10/14/2008 11:57:55.13 AM [0A80:0002-0914] ConvertMessages> Current folder: Top Of Store
Folder
10/14/2008 11:57:55.18 AM [0A80:0002-0914] ConvertMessages> Current folder: ($Calendar)
10/14/2008 11:57:55.43 AM [0A80:0002-0914] ConvertMessages> Current folder:
10/14/2008 11:57:56.16 AM [0A80:0002-0914] ConvertMessages> Current folder: Drafts
10/14/2008 11:57:56.57 AM [0A80:0002-0914] ConvertMessages> Current folder: Notes
10/14/2008 11:57:56.60 AM [0A80:0002-0914] ConvertMessages> Current folder: ($Drafts)
10/14/2008 11:57:56.61 AM [0A80:0002-0914] ConvertMessages> Current folder: ($Sent)
10/14/2008 11:57:56.61 AM [0A80:0002-0914] ConvertMessages> Current folder: ($ToDo)
10/14/2008 11:57:56.63 AM [0A80:0002-0914] ConvertMessages> Current folder: ($Inbox)
10/14/2008 11:57:56 AM Exchange Migration: User test user migrated. 0 message(s)
converted.
10/14/2008 11:57:56 AM test user registered successfully
```

##### DebugExchangeMigration=2

```
10/14/2008 12:06:37 PM Event Monitor started
Config(): Item not present:ProbPlacementThreshold
Config(): Item not present:ProbPlacementThreshold
```

10/14/2008 12:06:49 PM A public key could not be found in the Domino Directory for the following administrator: CN=Admin802 Domino/O=lotus  
10/14/2008 12:07:42 PM The upgrade application 'Microsoft Exchange Users' returned this error: MAPI logon failed.  
10/14/2008 12:07:54 PM The upgrade application 'Microsoft Exchange Users' returned this error: Address book restriction failed.  
10/14/2008 12:09:22 PM Notifying the current DUS (Domino Upgrade Services) application that registration is about to begin...  
10/14/2008 12:09:32 PM Registration completed. Now converting mail file for test user1...  
10/14/2008 12:09:32.93 PM [1178:0002-0DBC] ConvertMessages> Current folder: Top Of Store Folder  
10/14/2008 12:09:32.96 PM [1178:0002-0DBC] ConvertMessages> Current folder: (\$Calendar)  
10/14/2008 12:09:33.07 PM [1178:0002-0DBC] ConvertMessages> Current folder:  
10/14/2008 12:09:34.32 PM [1178:0002-0DBC] ConvertMessages> Current folder: Drafts  
10/14/2008 12:09:34.75 PM [1178:0002-0DBC] ConvertMessages> Current folder: Notes  
10/14/2008 12:09:34.75 PM [1178:0002-0DBC] ConvertMessages> Current folder: (\$Drafts)  
10/14/2008 12:09:34.77 PM [1178:0002-0DBC] ConvertMessages> Current folder: (\$Sent)  
10/14/2008 12:09:34.79 PM [1178:0002-0DBC] ConvertMessages> Current folder: (\$ToDo)  
10/14/2008 12:09:34.82 PM [1178:0002-0DBC] ConvertMessages> Current folder: (\$Inbox)  
10/14/2008 12:09:34 PM Exchange Migration: User test user1 migrated. 0 message(s) converted.  
10/14/2008 12:09:34 PM test user1 registered successfully

### **DebugExchangeMigration=3**

10/14/2008 12:16:22 PM Event Monitor started  
Config(): Item not present:ProbPlacementThreshold  
Config(): Item not present:ProbPlacementThreshold  
10/14/2008 12:28:01 PM A public key could not be found in the Domino Directory for the following administrator: CN=Admin802 Domino/O=lotus  
10/14/2008 12:30:09 PM The upgrade application 'Microsoft Exchange Users' returned this error: MAPI logon failed.  
10/14/2008 12:30:15 PM The upgrade application 'Microsoft Exchange Users' returned this error: Address book restriction failed.  
10/14/2008 12:31:17 PM Notifying the current DUS (Domino Upgrade Services) application that registration is about to begin...  
10/14/2008 12:31:27 PM Registration completed. Now converting mail file for test user2...  
10/14/2008 12:31:32.82 PM [0A68:0002-02A0] ConvertMessages> Current folder: Top Of Store Folder  
10/14/2008 12:31:32.85 PM [0A68:0002-02A0] ConvertMessages> Current folder: (\$Calendar)  
10/14/2008 12:31:33.00 PM [0A68:0002-02A0] ConvertMessages> Current folder:  
10/14/2008 12:31:34.41 PM [0A68:0002-02A0] ConvertMessages> Current folder: Drafts  
10/14/2008 12:31:34.83 PM [0A68:0002-02A0] ConvertMessages> Current folder: Notes  
10/14/2008 12:31:34.85 PM [0A68:0002-02A0] ConvertMessages> Current folder: (\$Drafts)  
10/14/2008 12:31:34.86 PM [0A68:0002-02A0] ConvertMessages> Current folder: (\$Sent)  
10/14/2008 12:31:34.86 PM [0A68:0002-02A0] ConvertMessages> Current folder: (\$ToDo)  
10/14/2008 12:31:34.88 PM [0A68:0002-02A0] ConvertMessages> Current folder: (\$Inbox)  
10/14/2008 12:31:35 PM Exchange Migration: User test user2 migrated. 0 message(s) converted.  
10/14/2008 12:31:35 PM test user2 registered successfully

Collect the data and send debug Outfile to IBM Technical support for further investigation.

## 3 Client-to-client migration steps

The Microsoft Outlook client stores local mail file data, including email messages, contacts, tasks, and calendar entries, in PST files. These files are used by the Outlook client to store messages from mail accounts other than Microsoft Exchange or Outlook (such as POP3), or to archive a user's Outlook mail file data. PST files can also be used to distribute local address books within an organization by copying contacts into a local PST file and distributing the file among employees.

### 3.1 Importance of local data migration

There are many common scenarios in which local data migration is necessary in the typical corporate infrastructure:

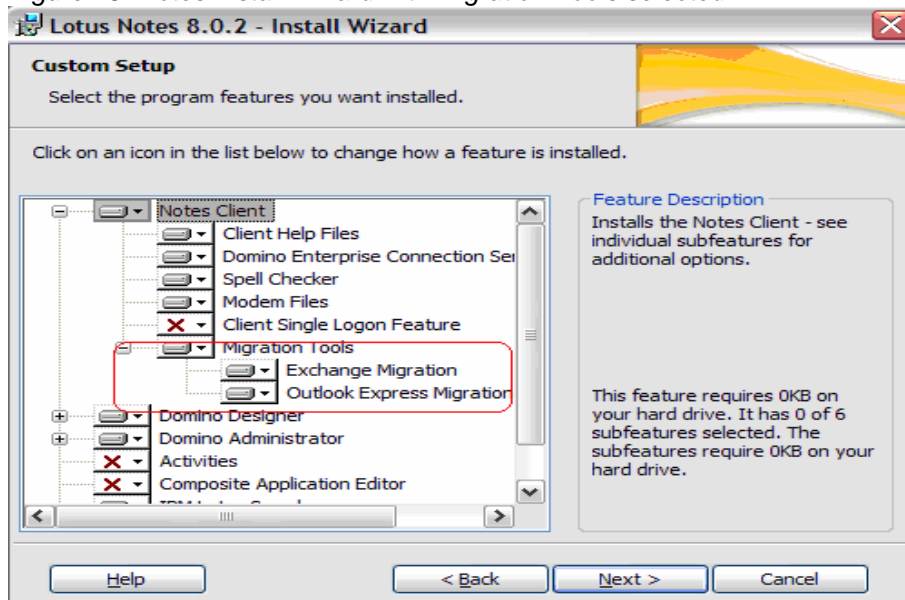
- Outlook users typically archive mail file data to a local PST file on a regular basis, which they need to continue accessing after they are migrated from Microsoft Exchange to a Domino mail client.
- Microsoft Exchange data storage is generally limited by the Exchange administrator, so Outlook users commonly have a significant amount of mail file data stored in a local PST file.
- Because of the Exchange data storage limitation, users might not have the option of moving local Outlook data back to the Microsoft Exchange server prior to migration from Microsoft Exchange to Domino.

### 3.2 Prerequisites

Before starting the migration, you must do the following:

1. Install the Lotus Notes client with the Migration Tools features "Exchange Migration" and "Outlook Express Migration" enabled (see figure 25).

Figure 25. Notes Install Wizard with Migration Tools selected



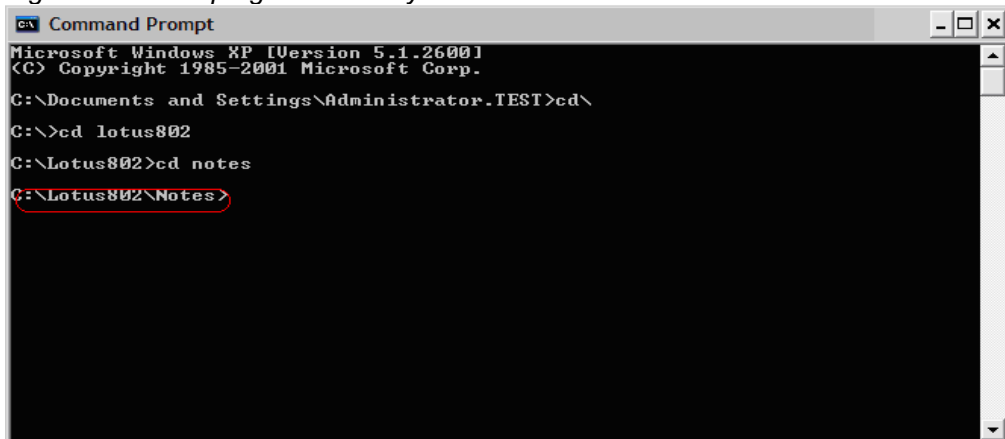
2. Make your Outlook client to be the default mail client from Internet Explorer.
3. Configure the Outlook profile with the correct PST file.

### 3.3 Migrating local PST files to NSF

To do this, follow these steps:

1. Go to a Windows command prompt and switch to the Lotus Notes program directory (see figure 26).

Figure 26. Notes program directory

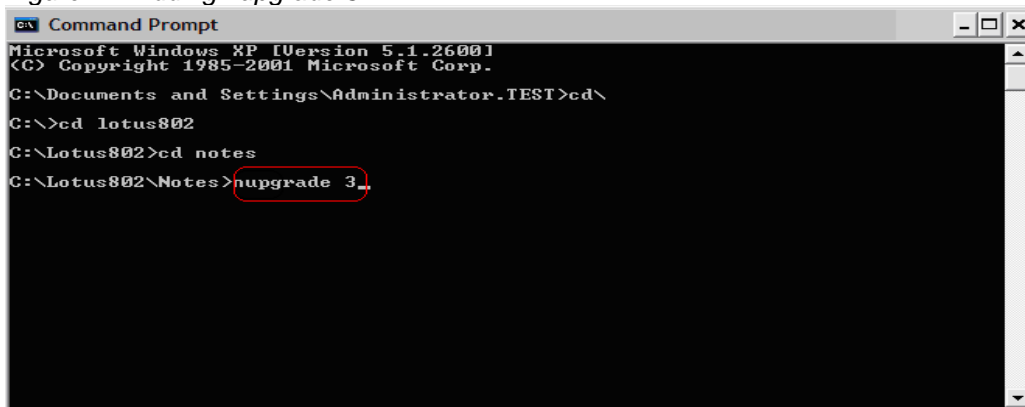


```
Microsoft Windows XP [Version 5.1.2600]
(C) Copyright 1985-2001 Microsoft Corp.

C:\Documents and Settings\Administrator.TEST>cd\
C:\>cd lotus802
C:\Lotus802>cd notes
C:\Lotus802\Notes>
```

2. Type “nupgrade 3” on this Windows command prompt line (see figure 27). Note that nupgrade 3 is only used for PST-to-NSF migration.

Figure 27. Adding nupgrade 3



```
Microsoft Windows XP [Version 5.1.2600]
(C) Copyright 1985-2001 Microsoft Corp.

C:\Documents and Settings\Administrator.TEST>cd\
C:\>cd lotus802
C:\Lotus802>cd notes
C:\Lotus802\Notes>nupgrade 3
```

3. The Nupgrade Migration wizard Welcome screen displays (see figure 28). Click Next.

Figure 28. Upgrade Wizard Welcome screen



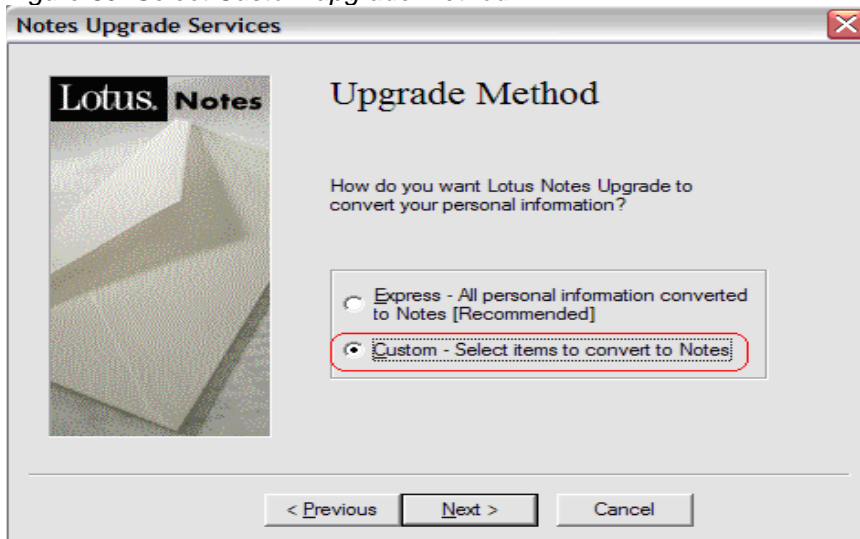
4. Select "Administrator" for the MS Exchange profile name and click Next (see figure 29).

Figure 29. Profile name



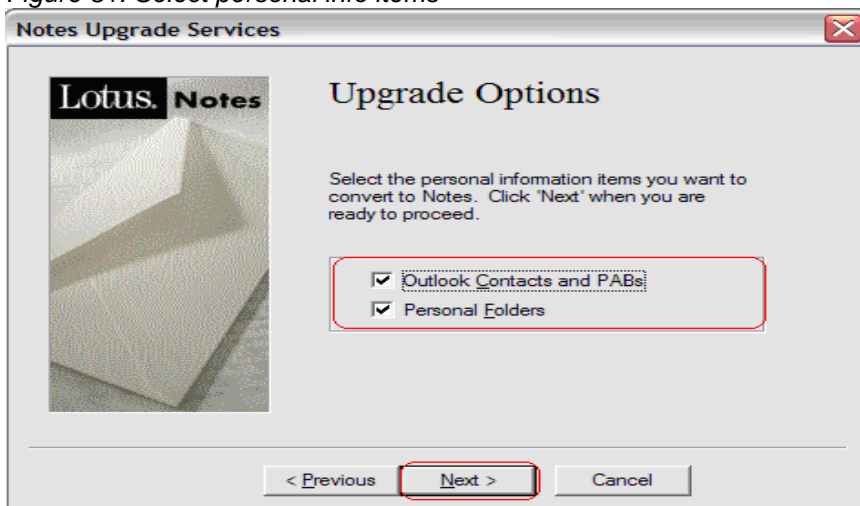
5. Click "Custom – Select items to convert to Notes," in case you want to migrate only contacts or mail documents (see figure 30). Click Next.

Figure 30. Select Custom upgrade method



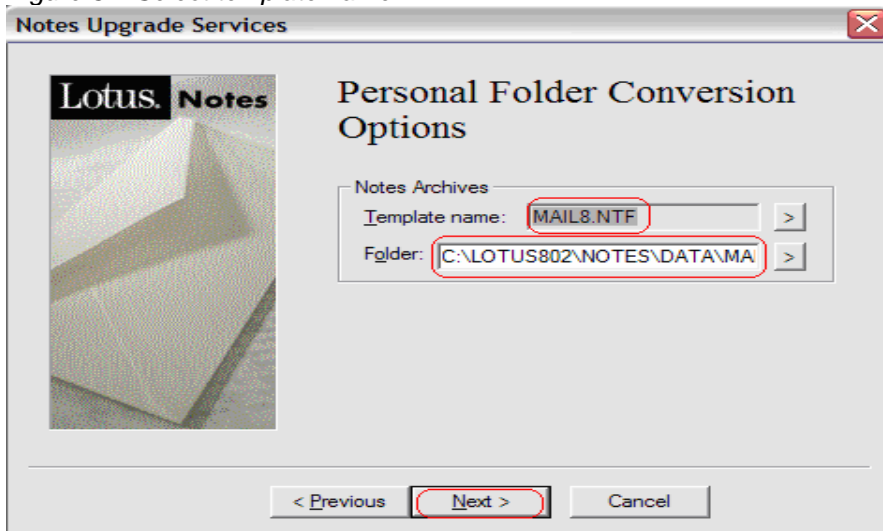
6. In the Upgrade Options screen, select your desired personal items to convert (see figure 31).

Figure 31. Select personal info items



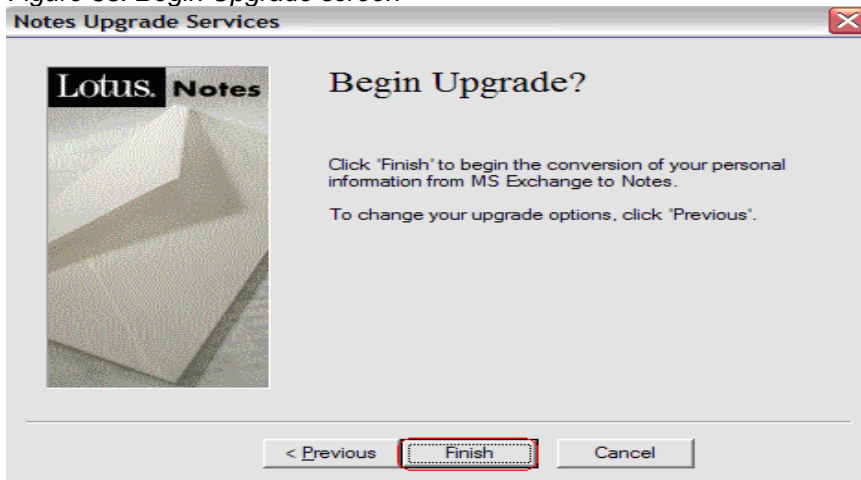
7. Select MAIL.NTF as the template name and select the directory where you want to migrate data (see figure 32). Click Next.

Figure 32. Select template name



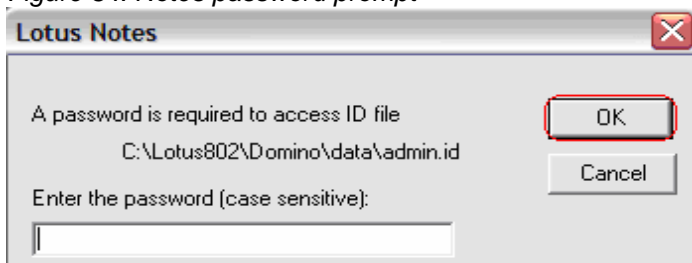
8. Click Finish to start the migration (see figure 33).

Figure 33. Begin Upgrade screen



9. Enter your user password to complete the migration (see figure 34).

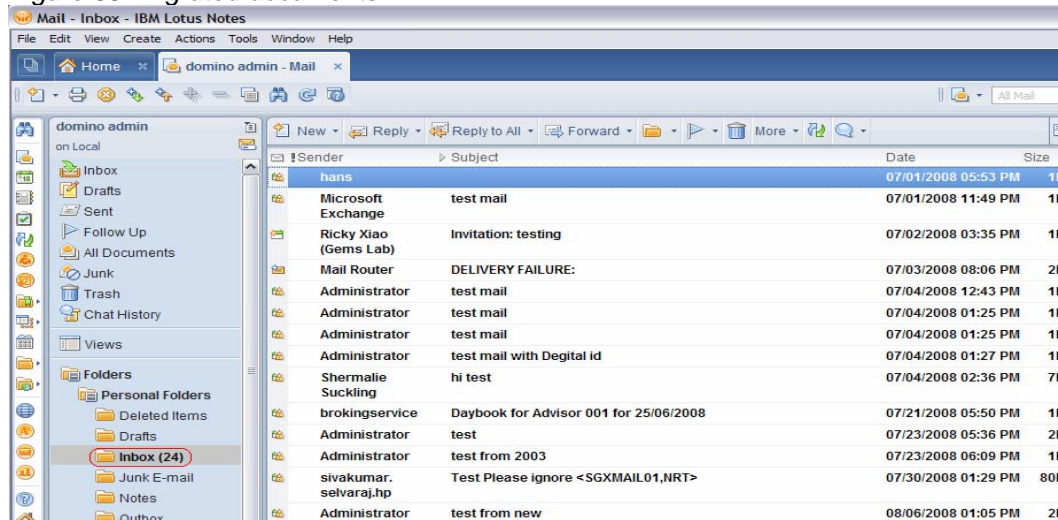
Figure 34. Notes password prompt



After the migration completes, you can find your data under Notes\data\MAIL\a\_PersonalFolders.nsf.

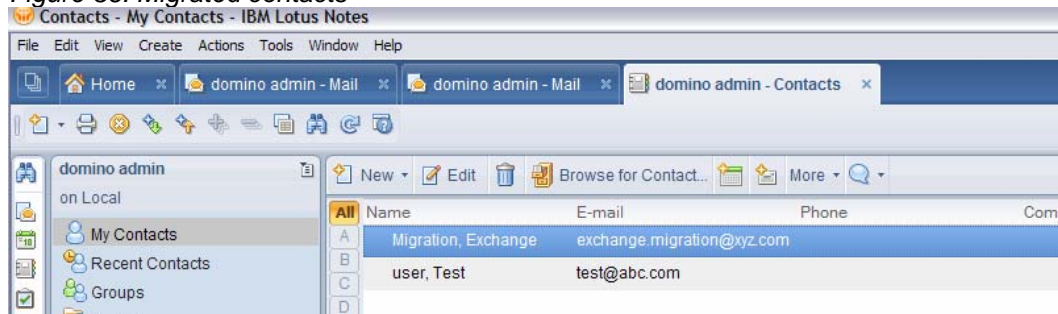
Open the local database from Lotus Notes to see all migrated documents (see figure 35).

Figure 35. Migrated documents



You can also check migrated contacts from Microsoft Outlook to Lotus Notes in the local address book (see figure 36).

Figure 36. Migrated contacts



### 3.4 Troubleshooting client migration issues

First, check the following points for initial troubleshooting before enabling debug parameters for in-depth analysis of the issue:

- The Outlook client should be the default mail client.
- You should have a Lotus Notes user ID and password.
- PST should point to the correct Outlook profile.
- Check the Miscellaneous Events log under the local log.nsf for any error messages.

#### Debug Parameter

You can enable the debug parameters below by entering them in the Notes.ini file located on the workstation from which the migration was performed. Here are the details of the debug values and sample output

DebugExchangeMigration=<value>

(NOTE: The value of this parameter can be set to 1,2, or 3)

Debug\_Outfile=<path to debug.txt>

**Sample Debug output:  
DebugExchangeMigration=1**

10/14/2008 01:07:59.80 PM [1510:0004-0840] ConvertMessages> Current folder:  
10/14/2008 01:07:59 PM PAB Migration: Number of entries migrated: 0  
10/14/2008 01:08:07 PM Personal Folder Migration: Migration of personal folder 'Personal Folders' started.  
10/14/2008 01:08:13.09 PM [1510:0004-0840] ConvertMessages> Current folder: Personal Folders  
10/14/2008 01:08:13.30 PM [1510:0004-0840] ConvertMessages> Current folder: Personal Folders\Deleted Items  
10/14/2008 01:08:13.49 PM [1510:0004-0840] ConvertMessages> Current folder: Personal Folders\Inbox  
10/14/2008 01:08:17.33 PM [1510:0004-0840] ConvertMessages> Current folder: Personal Folders\Outbox  
10/14/2008 01:08:17.55 PM [1510:0004-0840] ConvertMessages> Current folder: Personal Folders\Sent Items  
10/14/2008 01:08:17.94 PM [1510:0004-0840] ConvertMessages> Current folder: Personal Folders\Calendar  
10/14/2008 01:08:17.94 PM [1510:0004-0840] ConvertMessages> Current folder: Personal Folders\Contacts  
10/14/2008 01:08:18.24 PM [1510:0004-0840] ConvertMessages> Current folder: Personal Folders\Notes  
10/14/2008 01:08:18.24 PM [1510:0004-0840] ConvertMessages> Current folder: Personal Folders\Tasks  
10/14/2008 01:08:18.44 PM [1510:0004-0840] ConvertMessages> Current folder: Personal Folders\Drafts  
10/14/2008 01:08:18.63 PM [1510:0004-0840] ConvertMessages> Current folder: Personal Folders\Junk E-mail  
10/14/2008 01:08:18 PM Personal Folder Migration: Migration of personal folder 'Personal Folders' completed.  
10/14/2008 01:08:18 PM 36 message(s) converted.  
10/14/2008 01:08:18 PM 0 contact(s) converted.  
10/14/2008 01:08:18 PM 0 calendar entries converted.  
10/14/2008 01:08:18 PM 0 task(s) converted.  
10/14/2008 01:08:18 PM 0 errors encountered.

**DebugExchangeMigration=2**

10/14/2008 01:10:37.91 PM [12A0:0004-11E8] OpenExchMsgStore> Using UNICODE  
10/14/2008 01:10:37.93 PM [12A0:0004-11E8] ConvertMessages> Current folder:  
10/14/2008 01:10:37 PM PAB Migration: Number of entries migrated: 0  
10/14/2008 01:10:43.74 PM [12A0:0004-11E8] OpenExchMsgStore> GetMsgStoresTable failed passing MAPI\_UNICODE  
10/14/2008 01:10:43.74 PM [12A0:0004-11E8] OpenExchMsgStore> Using native character set  
10/14/2008 01:10:43.74 PM [12A0:0004-11E8] OpenExchMsgStore> Personal folders found in profile: 1  
10/14/2008 01:10:43 PM Personal Folder Migration: Migration of personal folder 'Personal Folders' started.  
10/14/2008 01:10:47.52 PM [12A0:0004-11E8] ConvertMessages> Current folder: Personal Folders  
10/14/2008 01:10:47.71 PM [12A0:0004-11E8] ConvertMessages> Current folder: Personal Folders\Deleted Items  
10/14/2008 01:10:47.92 PM [12A0:0004-11E8] ConvertMessages> Current folder: Personal Folders\Inbox

10/14/2008 01:10:51.23 PM [12A0:0004-11E8] ConvertMessages> Current folder: Personal Folders\Outbox  
10/14/2008 01:10:51.49 PM [12A0:0004-11E8] ConvertMessages> Current folder: Personal Folders\Sent Items  
10/14/2008 01:10:51.71 PM [12A0:0004-11E8] ConvertMessages> Current folder: Personal Folders\Calendar  
10/14/2008 01:10:51.71 PM [12A0:0004-11E8] ConvertMessages> Current folder: Personal Folders\Contacts  
10/14/2008 01:10:52.01 PM [12A0:0004-11E8] ConvertMessages> Current folder: Personal Folders\Notes  
10/14/2008 01:10:52.01 PM [12A0:0004-11E8] ConvertMessages> Current folder: Personal Folders\Tasks  
10/14/2008 01:10:52.20 PM [12A0:0004-11E8] ConvertMessages> Current folder: Personal Folders\Drafts  
10/14/2008 01:10:52.43 PM [12A0:0004-11E8] ConvertMessages> Current folder: Personal Folders\Junk E-mail  
10/14/2008 01:10:52 PM Personal Folder Migration: Migration of personal folder 'Personal Folders' completed.  
10/14/2008 01:10:52 PM 36 message(s) converted.  
10/14/2008 01:10:52 PM 0 contact(s) converted.  
10/14/2008 01:10:52 PM 0 calendar entries converted.  
10/14/2008 01:10:52 PM 0 task(s) converted.  
10/14/2008 01:10:52 PM 0 errors encountered.

### **DebugExchangeMigration=3**

10/14/2008 01:13:02.60 PM [135C:0004-13C0] MExchangeRequestArchiveMigration> Ansi mail file name:  
10/14/2008 01:13:02.60 PM [135C:0004-13C0] MExchangeRequestArchiveMigration> OEM mail file name:  
10/14/2008 01:13:02.84 PM [135C:0004-13C0] OpenExchMsgStore> Using UNICODE  
10/14/2008 01:13:02.84 PM [135C:0004-13C0] ConvertMessages> Current folder:  
10/14/2008 01:13:02 PM PAB Migration: Number of entries migrated: 0  
10/14/2008 01:13:08.36 PM [135C:0004-13C0] MExchangeRequestArchiveMigration> Ansi mail file name: C:\LOTUS802\nOTES\DATA\MAIL\A\_PersonalFolders.nsf  
10/14/2008 01:13:08.36 PM [135C:0004-13C0] MExchangeRequestArchiveMigration> OEM mail file name: C:\LOTUS802\nOTES\DATA\MAIL\A\_PersonalFolders.nsf  
10/14/2008 01:13:08.43 PM [135C:0004-13C0] OpenExchMsgStore> GetMsgStoresTable failed passing MAPI\_UNICODE  
10/14/2008 01:13:08.43 PM [135C:0004-13C0] OpenExchMsgStore> Using native character set  
10/14/2008 01:13:08.43 PM [135C:0004-13C0] OpenExchMsgStore> Personal folders found in profile: 1  
10/14/2008 01:13:08 PM Personal Folder Migration: Migration of personal folder 'Personal Folders' started.  
10/14/2008 01:13:18.07 PM [135C:0004-13C0] ConvertMessages> Current folder: Personal Folders  
10/14/2008 01:13:18.26 PM [135C:0004-13C0] ConvertMessages> Current folder: Personal Folders\Deleted Items  
10/14/2008 01:13:18.44 PM [135C:0004-13C0] ConvertMessages> Current folder: Personal Folders\Inbox  
10/14/2008 01:13:18.44 PM [135C:0004-13C0] AppendToNote> MsgType: 5, Prop Tag: 0x00170003, Notes Item: DeliveryPriority  
10/14/2008 01:13:18.44 PM [135C:0004-13C0] AppendToNote> MsgType: 5, Prop Tag: 0x001A001E, Notes Item:  
10/14/2008 01:13:18.44 PM [135C:0004-13C0] AppendToNote> MsgType: 5, Prop Tag: 0x00260003, Notes Item: DeliveryPriority

10/14/2008 01:13:18.44 PM [135C:0004-13C0] AppendToNote> MsgType: 5, Prop Tag: 0x00360003, Notes Item: OrgConfidential  
10/14/2008 01:13:18.46 PM [135C:0004-13C0] AppendToNote> MsgType: 5, Prop Tag: 0x0037001E -- NOT MAPPED  
10/14/2008 01:13:18.46 PM [135C:0004-13C0] AppendToNote> MsgType: 5, Prop Tag: 0x00390040, Notes Item: PostedDate  
10/14/2008 01:13:18.46 PM [135C:0004-13C0] AppendToNote> Appending item: PostedDate  
10/14/2008 01:13:18.46 PM [135C:0004-13C0] AppendToNote> NSFItemAppend status: 0x0000  
10/14/2008 01:13:18.46 PM [135C:0004-13C0] AppendToNote> MsgType: 5, Prop Tag: 0x003B0102 -- NOT MAPPED  
10/14/2008 01:13:18.46 PM [135C:0004-13C0] AppendToNote> MsgType: 5, Prop Tag: 0x003F0102 -- NOT MAPPED  
10/14/2008 01:13:18.47 PM [135C:0004-13C0] AppendToNote> MsgType: 5, Prop Tag: 0x0040001E -- NOT MAPPED  
10/14/2008 01:13:18.47 PM [135C:0004-13C0] AppendToNote> MsgType: 5, Prop Tag: 0x00410102 -- NOT MAPPED  
10/14/2008 01:13:18.47 PM [135C:0004-13C0] AppendToNote> MsgType: 5, Prop Tag: 0x0042001E, Notes Item:  
10/14/2008 01:13:18.47 PM [135C:0004-13C0] AppendToNote> MsgType: 5, Prop Tag: 0x00430102 -- NOT MAPPED  
10/14/2008 01:13:18.49 PM [135C:0004-13C0] AppendToNote> MsgType: 5, Prop Tag: 0x0044001E -- NOT MAPPED  
10/14/2008 01:13:18.49 PM [135C:0004-13C0] AppendToNote> MsgType: 5, Prop Tag: 0x00510102 -- NOT MAPPED  
10/14/2008 01:13:18.49 PM [135C:0004-13C0] AppendToNote> MsgType: 5, Prop Tag: 0x00520102 -- NOT MAPPED  
10/14/2008 01:13:18.49 PM [135C:0004-13C0] AppendToNote> MsgType: 5, Prop Tag: 0x00600040 -- NOT MAPPED  
10/14/2008 01:13:18.51 PM [135C:0004-13C0] AppendToNote> MsgType: 5, Prop Tag: 0x00610040 -- NOT MAPPED  
10/14/2008 01:13:18.51 PM [135C:0004-13C0] AppendToNote> MsgType: 5, Prop Tag: 0x00620003 -- NOT MAPPED  
10/14/2008 01:13:18.51 PM [135C:0004-13C0] AppendToNote> MsgType: 5, Prop Tag: 0x0063000B -- NOT MAPPED  
10/14/2008 01:13:18.51 PM [135C:0004-13C0] AppendToNote> MsgType: 5, Prop Tag: 0x0064001E -- NOT MAPPED  
10/14/2008 01:13:18.51 PM [135C:0004-13C0] AppendToNote> MsgType: 5, Prop Tag: 0x0065001E -- NOT MAPPED  
10/14/2008 01:13:18.51 PM [135C:0004-13C0] AppendToNote> MsgType: 5, Prop Tag: 0x0070001E -- NOT MAPPED  
10/14/2008 01:13:18.51 PM [135C:0004-13C0] AppendToNote> MsgType: 5, Prop Tag: 0x00710102 -- NOT MAPPED  
10/14/2008 01:13:18.52 PM [135C:0004-13C0] AppendToNote> MsgType: 5, Prop Tag: 0x0075001E -- NOT MAPPED  
10/14/2008 01:13:18.52 PM [135C:0004-13C0] AppendToNote> MsgType: 5, Prop Tag: 0x0076001E -- NOT MAPPED  
10/14/2008 01:13:18.52 PM [135C:0004-13C0] AppendToNote> MsgType: 5, Prop Tag: 0x0077001E -- NOT MAPPED  
10/14/2008 01:13:18.52 PM [135C:0004-13C0] AppendToNote> MsgType: 5, Prop Tag: 0x0078001E -- NOT MAPPED  
10/14/2008 01:13:18.52 PM [135C:0004-13C0] AppendToNote> MsgType: 5, Prop Tag: 0x007D001E -- NOT MAPPED  
10/14/2008 01:13:18.52 PM [135C:0004-13C0] AppendToNote> MsgType: 5, Prop Tag: 0x0C17000B -- NOT MAPPED  
10/14/2008 01:13:18.54 PM [135C:0004-13C0] AppendToNote> MsgType: 5, Prop Tag: 0x0C190102 -- NOT MAPPED

10/14/2008 01:13:18.54 PM [135C:0004-13C0] AppendToNote> MsgType: 5, Prop Tag: 0x0C1A001E, Notes Item:  
10/14/2008 01:13:18.54 PM [135C:0004-13C0] AppendToNote> MsgType: 5, Prop Tag: 0x0C1D0102 -- NOT MAPPED  
10/14/2008 01:13:18.54 PM [135C:0004-13C0] AppendToNote> MsgType: 5, Prop Tag: 0x0C1E001E -- NOT MAPPED  
10/14/2008 01:13:18.54 PM [135C:0004-13C0] AppendToNote> MsgType: 5, Prop Tag: 0x0C1F001E, Notes Item:  
10/14/2008 01:13:18.54 PM [135C:0004-13C0] AppendToNote> MsgType: 5, Prop Tag: 0x0E04001E, Notes Item:  
10/14/2008 01:13:18.55 PM [135C:0004-13C0] AppendToNote> MsgType: 5, Prop Tag: 0x0E060040, Notes Item: DeliveredDate  
10/14/2008 01:13:18.55 PM [135C:0004-13C0] AppendToNote> Appending item: DeliveredDate  
10/14/2008 01:13:18.55 PM [135C:0004-13C0] AppendToNote> NSFItemAppend status: 0x0000  
10/14/2008 01:13:18.55 PM [135C:0004-13C0] AppendToNote> MsgType: 5, Prop Tag: 0x0E070003 -- NOT MAPPED  
10/14/2008 01:13:18.55 PM [135C:0004-13C0] AppendToNote> MsgType: 5, Prop Tag: 0x0E080003 -- NOT MAPPED  
10/14/2008 01:13:18.55 PM [135C:0004-13C0] AppendToNote> MsgType: 5, Prop Tag: 0x0E230003 -- NOT MAPPED  
10/14/2008 01:13:18.55 PM [135C:0004-13C0] AppendToNote> MsgType: 5, Prop Tag: 0x0E270102 -- NOT MAPPED  
10/14/2008 01:13:18.57 PM [135C:0004-13C0] AppendToNote> MsgType: 5, Prop Tag: 0x0E62000B -- NOT MAPPED  
10/14/2008 01:13:18.57 PM [135C:0004-13C0] AppendToNote> MsgType: 5, Prop Tag: 0x0E790003 -- NOT MAPPED  
10/14/2008 01:13:18.57 PM [135C:0004-13C0] AppendToNote> MsgType: 5, Prop Tag: 0x1000001E -- NOT MAPPED  
10/14/2008 01:13:18.57 PM [135C:0004-13C0] AppendToNote> MsgType: 5, Prop Tag: 0x10090102, Notes Item: Body  
10/14/2008 01:13:18.58 PM [135C:0004-13C0] AppendToNote> MsgType: 5, Prop Tag: 0x1035001E -- NOT MAPPED  
10/14/2008 01:13:18.58 PM [135C:0004-13C0] AppendToNote> MsgType: 5, Prop Tag: 0x10C30040 -- NOT MAPPED  
10/14/2008 01:13:18.58 PM [135C:0004-13C0] AppendToNote> MsgType: 5, Prop Tag: 0x10C40040 -- NOT MAPPED  
10/14/2008 01:13:18.60 PM [135C:0004-13C0] AppendToNote> MsgType: 5, Prop Tag: 0x10F3001E -- NOT MAPPED  
10/14/2008 01:13:18.60 PM [135C:0004-13C0] AppendToNote> MsgType: 5, Prop Tag: 0x10F4000B -- NOT MAPPED  
10/14/2008 01:13:18.60 PM [135C:0004-13C0] AppendToNote> MsgType: 5, Prop Tag: 0x10F5000B -- NOT MAPPED  
10/14/2008 01:13:18.60 PM [135C:0004-13C0] AppendToNote> MsgType: 5, Prop Tag: 0x10F6000B -- NOT MAPPED  
10/14/2008 01:13:18.61 PM [135C:0004-13C0] AppendToNote> MsgType: 5, Prop Tag: 0x30070040 -- NOT MAPPED  
10/14/2008 01:13:18.61 PM [135C:0004-13C0] AppendToNote> MsgType: 5, Prop Tag: 0x30080040 -- NOT MAPPED  
10/14/2008 01:13:18.61 PM [135C:0004-13C0] AppendToNote> MsgType: 5, Prop Tag: 0x300B0102 -- NOT MAPPED  
10/14/2008 01:13:18.61 PM [135C:0004-13C0] AppendToNote> MsgType: 5, Prop Tag: 0x3FDE0003 -- NOT MAPPED  
10/14/2008 01:13:18.63 PM [135C:0004-13C0] AppendToNote> MsgType: 5, Prop Tag: 0x3FF10003 -- NOT MAPPED  
10/14/2008 01:13:18.63 PM [135C:0004-13C0] AppendToNote> MsgType: 5, Prop Tag: 0x3FFA001E -- NOT MAPPED

10/14/2008 01:13:18.63 PM [135C:0004-13C0] AppendToNote> MsgType: 5, Prop Tag: 0x3FFD0003 -- NOT MAPPED  
10/14/2008 01:13:18.63 PM [135C:0004-13C0] AppendToNote> MsgType: 5, Prop Tag: 0x40190003 -- NOT MAPPED  
10/14/2008 01:13:18.65 PM [135C:0004-13C0] AppendToNote> MsgType: 5, Prop Tag: 0x401A0003 -- NOT MAPPED  
10/14/2008 01:13:18.65 PM [135C:0004-13C0] AppendToNote> MsgType: 5, Prop Tag: 0x401B0003 -- NOT MAPPED  
10/14/2008 01:13:18.65 PM [135C:0004-13C0] AppendToNote> MsgType: 5, Prop Tag: 0x401C0003 -- NOT MAPPED  
10/14/2008 01:13:18.65 PM [135C:0004-13C0] AppendToNote> MsgType: 5, Prop Tag: 0x65C60003 -- NOT MAPPED  
10/14/2008 01:13:18.66 PM [135C:0004-13C0] AppendToNote> MsgType: 5, Prop Tag: 0x65E20102 -- NOT MAPPED  
10/14/2008 01:13:18.66 PM [135C:0004-13C0] AppendToNote> MsgType: 5, Prop Tag: 0x65E30102 -- NOT MAPPED  
10/14/2008 01:13:18.66 PM [135C:0004-13C0] AppendToNote> MsgType: 5, Prop Tag: 0x7D01000B -- NOT MAPPED  
10/14/2008 01:13:18.66 PM [135C:0004-13C0] AppendToNote> MsgType: 5, Prop Tag: 0x8001000B, Notes Item: \$MAPIName0006200800000000C0000000000004600008503  
10/14/2008 01:13:18.66 PM [135C:0004-13C0] AppendToNote> Appending item: \$MAPIName0006200800000000C0000000000004600008503  
10/14/2008 01:13:18.66 PM [135C:0004-13C0] AppendToNote> NSFItemAppend status: 0x0000  
10/14/2008 01:13:18.66 PM [135C:0004-13C0] AppendToNote> MsgType: 5, Prop Tag: 0x8002000B, Notes Item:  
10/14/2008 01:13:18.68 PM [135C:0004-13C0] AppendToNote> MsgType: 5, Prop Tag: 0x80030003 -- NOT MAPPED  
10/14/2008 01:13:18.68 PM [135C:0004-13C0] AppendToNote> MsgType: 5, Prop Tag: 0x8007000B -- NOT MAPPED  
10/14/2008 01:13:18.68 PM [135C:0004-13C0] AppendToNote> MsgType: 5, Prop Tag: 0x8015000B -- NOT MAPPED  
10/14/2008 01:13:18.68 PM [135C:0004-13C0] AppendToNote> MsgType: 5, Prop Tag: 0x80160003 -- NOT MAPPED  
10/14/2008 01:13:18.68 PM [135C:0004-13C0] AppendToNote> MsgType: 5, Prop Tag: 0x80170040, Notes Item: \$MAPIName0006200800000000C0000000000004600008502  
10/14/2008 01:13:18.68 PM [135C:0004-13C0] AppendToNote> Appending item: \$MAPIName0006200800000000C0000000000004600008502  
10/14/2008 01:13:18.69 PM [135C:0004-13C0] AppendToNote> NSFItemAppend status: 0x0000  
10/14/2008 01:13:18.69 PM [135C:0004-13C0] AppendToNote> MsgType: 5, Prop Tag: 0x80180040, Notes Item: \$MAPIName0006200800000000C0000000000004600008560  
10/14/2008 01:13:18.69 PM [135C:0004-13C0] AppendToNote> Appending item: \$MAPIName0006200800000000C0000000000004600008560  
10/14/2008 01:13:18.69 PM [135C:0004-13C0] AppendToNote> NSFItemAppend status: 0x0000  
10/14/2008 01:13:18.69 PM [135C:0004-13C0] AppendToNote> MsgType: 5, Prop Tag: 0x80190040 -- NOT MAPPED  
10/14/2008 01:13:18.71 PM [135C:0004-13C0] AppendToNote> MsgType: 5, Prop Tag: 0x801A0040 -- NOT MAPPED  
10/14/2008 01:13:18.71 PM [135C:0004-13C0] AppendToNote> MsgType: 5, Prop Tag: 0x80700040, Notes Item: StartDate  
10/14/2008 01:13:18.72 PM [135C:0004-13C0] AppendToNote> MsgType: 5, Prop Tag: 0x80710040, Notes Item: EndDateTime  
10/14/2008 01:13:18.74 PM [135C:0004-13C0] AppendToNote> MsgType: 5, Prop Tag: 0x80720003 -- NOT MAPPED  
10/14/2008 01:13:18.74 PM [135C:0004-13C0] AppendToNote> MsgType: 5, Prop Tag: 0x8073001E, Notes Item: Location  
10/14/2008 01:13:18.74 PM [135C:0004-13C0] AppendToNote> Appending item: Location

10/14/2008 01:13:18.76 PM [135C:0004-13C0] AppendToNote> NSFItemAppend status: 0x0000  
10/14/2008 01:13:18.76 PM [135C:0004-13C0] AppendToNote> MsgType: 5, Prop Tag:  
0x80750102 -- NOT MAPPED  
10/14/2008 01:13:18.76 PM [135C:0004-13C0] AppendToNote> MsgType: 5, Prop Tag:  
0x80760003, Notes Item: OUTLOOKBUSY  
10/14/2008 01:13:18.77 PM [135C:0004-13C0] AppendToNote> MsgType: 5, Prop Tag:  
0x8078000B, Notes Item:  
10/14/2008 01:13:18.77 PM [135C:0004-13C0] AppendToNote> MsgType: 5, Prop Tag:  
0x80860102, Notes Item: ApptUNID  
10/14/2008 01:13:18.79 PM [135C:0004-13C0] AppendToNote> MsgType: 5, Prop Tag:  
0x80870102 -- NOT MAPPED  
10/14/2008 01:13:18.79 PM [135C:0004-13C0] AppendToNote> MsgType: 5, Prop Tag:  
0x80880003, Notes Item: SequenceNum  
10/14/2008 01:13:18.79 PM [135C:0004-13C0] AppendToNote> MsgType: 5, Prop Tag:  
0x80890040 -- NOT MAPPED  
10/14/2008 01:13:18.79 PM [135C:0004-13C0] AppendToNote> MsgType: 5, Prop Tag:  
0x808A0003, Notes Item:  
10/14/2008 01:13:18.79 PM [135C:0004-13C0] AppendToNote> MsgType: 5, Prop Tag:  
0x808B0003, Notes Item:  
10/14/2008 01:13:18.79 PM [135C:0004-13C0] AppendToNote> MsgType: 5, Prop Tag:  
0x808C0040 -- NOT MAPPED  
10/14/2008 01:13:18.80 PM [135C:0004-13C0] AppendToNote> MsgType: 5, Prop Tag:  
0x808D001E -- NOT MAPPED  
10/14/2008 01:13:18.80 PM [135C:0004-13C0] AppendToNote> MsgType: 5, Prop Tag:  
0x808E0040 -- NOT MAPPED  
10/14/2008 01:13:18.80 PM [135C:0004-13C0] AppendToNote> MsgType: 5, Prop Tag:  
0x808F0040 -- NOT MAPPED  
10/14/2008 01:13:18.80 PM [135C:0004-13C0] AppendToNote> MsgType: 5, Prop Tag:  
0x80900003 -- NOT MAPPED  
10/14/2008 01:13:18.80 PM [135C:0004-13C0] AppendToNote> MsgType: 5, Prop Tag:  
0x8091000B -- NOT MAPPED  
10/14/2008 01:13:18.80 PM [135C:0004-13C0] AppendToNote> MsgType: 5, Prop Tag:  
0x80920003 -- NOT MAPPED  
10/14/2008 01:13:18.82 PM [135C:0004-13C0] AppendToNote> MsgType: 5, Prop Tag:  
0x80930003 -- NOT MAPPED  
10/14/2008 01:13:18.82 PM [135C:0004-13C0] AppendToNote> MsgType: 5, Prop Tag:  
0x8094001E -- NOT MAPPED  
10/14/2008 01:13:18.82 PM [135C:0004-13C0] AppendToNote> MsgType: 5, Prop Tag:  
0x80950003 -- NOT MAPPED  
10/14/2008 01:13:18.82 PM [135C:0004-13C0] AppendToNote> MsgType: 5, Prop Tag:  
0x8096001E -- NOT MAPPED  
10/14/2008 01:13:18.82 PM [135C:0004-13C0] AppendToNote> MsgType: 5, Prop Tag:  
0x8097001E -- NOT MAPPED  
10/14/2008 01:13:18.82 PM [135C:0004-13C0] AppendToNote> MsgType: 5, Prop Tag:  
0x80980040 -- NOT MAPPED  
10/14/2008 01:13:18.82 PM [135C:0004-13C0] AppendToNote> MsgType: 5, Prop Tag:  
0x80990040 -- NOT MAPPED  
10/14/2008 01:13:18.83 PM [135C:0004-13C0] AppendToNote> MsgType: 5, Prop Tag:  
0x809A0040 -- NOT MAPPED  
10/14/2008 01:13:18.83 PM [135C:0004-13C0] AppendToNote> MsgType: 5, Prop Tag:  
0x809B0040 -- NOT MAPPED  
10/14/2008 01:13:18.83 PM [135C:0004-13C0] AppendToNote> MsgType: 5, Prop Tag:  
0x809C0003 -- NOT MAPPED  
10/14/2008 01:13:18.83 PM [135C:0004-13C0] AppendToNote> MsgType: 5, Prop Tag:  
0x809D000B -- NOT MAPPED

10/14/2008 01:13:18.83 PM [135C:0004-13C0] AppendToNote> MsgType: 5, Prop Tag: 0x809E000B -- NOT MAPPED  
10/14/2008 01:13:18.83 PM [135C:0004-13C0] AppendToNote> MsgType: 5, Prop Tag: 0x809F000B -- NOT MAPPED  
10/14/2008 01:13:18.85 PM [135C:0004-13C0] AppendToNote> MsgType: 5, Prop Tag: 0x80A0001E, Notes Item: StartTimeZone  
10/14/2008 01:13:18.85 PM [135C:0004-13C0] AppendToNote> MsgType: 5, Prop Tag: 0x80A1001E -- NOT MAPPED  
10/14/2008 01:13:18.86 PM [135C:0004-13C0] AppendToNote> MsgType: 5, Prop Tag: 0x80A2001E -- NOT MAPPED  
10/14/2008 01:13:18.86 PM [135C:0004-13C0] AppendToNote> MsgType: 5, Prop Tag: 0x80A30003 -- NOT MAPPED  
10/14/2008 01:13:18.86 PM [135C:0004-13C0] AppendToNote> MsgType: 5, Prop Tag: 0x80A40003 -- NOT MAPPED  
10/14/2008 01:13:18.86 PM [135C:0004-13C0] AppendToNote> MsgType: 5, Prop Tag: 0x80A5001E -- NOT MAPPED  
10/14/2008 01:13:18.86 PM [135C:0004-13C0] AppendToNote> MsgType: 5, Prop Tag: 0x80A6001E -- NOT MAPPED  
10/14/2008 01:13:18.86 PM [135C:0004-13C0] AppendToNote> MsgType: 5, Prop Tag: 0x80A7001E -- NOT MAPPED  
10/14/2008 01:13:18.86 PM [135C:0004-13C0] AppendToNote> MsgType: 5, Prop Tag: 0x80A8001E -- NOT MAPPED  
10/14/2008 01:13:18.88 PM [135C:0004-13C0] AppendToNote> MsgType: 5, Prop Tag: 0x80A9001E -- NOT MAPPED  
10/14/2008 01:13:18.88 PM [135C:0004-13C0] AppendToNote> MsgType: 5, Prop Tag: 0x80AA001E -- NOT MAPPED  
10/14/2008 01:13:18.88 PM [135C:0004-13C0] AppendToNote> MsgType: 5, Prop Tag: 0x80AB001E -- NOT MAPPED  
10/14/2008 01:13:18.88 PM [135C:0004-13C0] AppendToNote> MsgType: 5, Prop Tag: 0x80AC001E -- NOT MAPPED  
10/14/2008 01:13:18.88 PM [135C:0004-13C0] AppendToNote> MsgType: 5, Prop Tag: 0x80AD001E -- NOT MAPPED  
10/14/2008 01:13:18.88 PM [135C:0004-13C0] AppendToNote> MsgType: 5, Prop Tag: 0x80AE001E -- NOT MAPPED  
10/14/2008 01:13:18.90 PM [135C:0004-13C0] AppendToNote> MsgType: 5, Prop Tag: 0x80AF001E -- NOT MAPPED  
10/14/2008 01:13:18.90 PM [135C:0004-13C0] AppendToNote> MsgType: 5, Prop Tag: 0x003D001E -- NOT MAPPED  
10/14/2008 01:13:18.90 PM [135C:0004-13C0] AppendToNote> MsgType: 5, Prop Tag: 0x0E02001E, Notes Item:  
10/14/2008 01:13:18.90 PM [135C:0004-13C0] AppendToNote> MsgType: 5, Prop Tag: 0x0E03001E, Notes Item:  
10/14/2008 01:13:18.90 PM [135C:0004-13C0] AppendToNote> MsgType: 5, Prop Tag: 0x0E090102 -- NOT MAPPED  
10/14/2008 01:13:18.90 PM [135C:0004-13C0] AppendToNote> MsgType: 5, Prop Tag: 0x0E12000D -- NOT MAPPED  
10/14/2008 01:13:18.90 PM [135C:0004-13C0] AppendToNote> MsgType: 5, Prop Tag: 0x0E13000D -- NOT MAPPED  
10/14/2008 01:13:18.90 PM [135C:0004-13C0] AppendToNote> MsgType: 5, Prop Tag: 0x0E1B000B, Notes Item:  
10/14/2008 01:13:18.90 PM [135C:0004-13C0] AppendToNote> MsgType: 5, Prop Tag: 0x0E1D001E, Notes Item: Subject  
10/14/2008 01:13:18.91 PM [135C:0004-13C0] AppendToNote> Appending item: Subject  
10/14/2008 01:13:18.91 PM [135C:0004-13C0] AppendToNote> NSFItemAppend status: 0x0000  
10/14/2008 01:13:18.91 PM [135C:0004-13C0] AppendToNote> Subject = testing

Collect the data and send debug Outfile to IBM Technical support for further investigation.

## 4 Conclusion

This white paper has provided the details of how to migrate a Microsoft Exchange server and client to Lotus Domino and Notes. By using the simple steps outlined in this document, a Domino Administrator can fairly easily migrate data from Microsoft Exchange to Domino 8. Likewise, the Outlook client can be migrated to Lotus Notes following the client-to-client migration steps provided.

## 5 Resources

- IBM Redbooks publication, [Migrating from Microsoft Exchange 2000/2003 to Lotus Notes and Domino 7](#)
- IBM Redbooks publication, [Migrating from Microsoft Exchange 5.5 to Lotus Notes and Domino 6](#)
- IBM Support Technote #:1178441, [How to migrate users and their mail files from Microsoft Exchange to Domino using the Domino Migration Tool](#)

## 6 About the author

Hansraj Mali is a Technical Advisor for the Lotus Domino/Notes Mail & Messaging Team in the IBM technical support center in Pune, India. He is a Microsoft Certified Trainer (MCT) and worked extensively with the Microsoft Exchange server before joining IBM in 2005, where he works on the Notes/Domino technical support team. You can reach him at [hansmali@in.ibm.com](mailto:hansmali@in.ibm.com).

### Trademarks

- Domino, IBM, Lotus, and Notes are trademarks or registered trademarks of IBM Corporation in the United States, other countries, or both.
- Windows is a registered trademark of Microsoft Corporation in the United States, other countries, or both.
- Other company, product, and service names may be trademarks or service marks of others.